



SECOND MEETING

ARAB TASK FORCE ON POPULATION AND HOUSING CENSUSES

2020 ROUND

Dissemination and use of census data in MOROCCO

Ali SAOUD, Mr.
Statistician
Directorate of Statistics

Cairo, 22-23 January 2017



Outline

- ▶ An overview of the 2014 Population and Housing Census in Morocco
- ▶ A database containing a wide-range of census indicators
- ▶ Dynamic census atlases: the power of maps
- ▶ National and regional reports, and thematic publications
- ▶ Requests for specific additional information
- ▶ Use of census data: better statistics, better decisions



An overview of the 2014 Population and Housing Census in Morocco

- On 2014, Morocco conducted its 6th Population and Housing Census, following those in 1960, 1971, 1982, 1994, and 2004
- A post-censal survey has been conducted right after the census to assess its coverage
- Coverage rate reached 98.62 per cent, which is the highest rate since 1960
- IT was used for processing 2014 census questionnaires (ADR) to ensure quality and timeliness, and for disseminating data thereafter



A database containing a wide-range of census indicators

- User-friendly online application developed in-house
- Indicators set out in the application are the most frequently used and requested
- About 40 predefined indicators segregated by gender and place of residence (Urban/Rural)
- Indicators are drawn up in a detailed geographical level: Regions (12) / Prefectures and Provinces (75) / Urban and Rural Municipalities, and Arrondissements (1538)



A database containing a wide-range of census indicators

- All Census topics are covered: Demography, Disability, Education and Literacy, Dialects, Employment, Households Living Conditions
- An introducing section which highlights the key figures of the 2014 Census
- A section dedicated to definitions and concepts related to the published indicators
- All indicators are downloadable in Excel format
- Link: <http://rgphentableaux.hcp.ma>
- Available in French only



A database containing a wide-range of census indicators



Chiffres clés

Indicateurs RGPH2014

Concepts et définitions

Population légale

33 848 242

Nombre de ménages

7 313 806

Taux d'urbanisation

60,3%

Taux d'analphabétisme

32,2%

Taux net d'activité

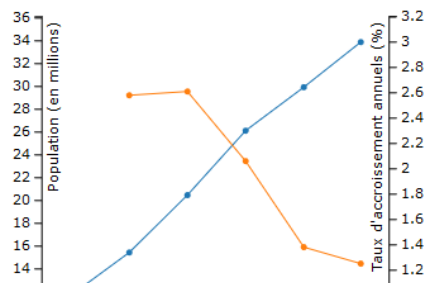
47,6%

Prévalence du handicap

5,1%

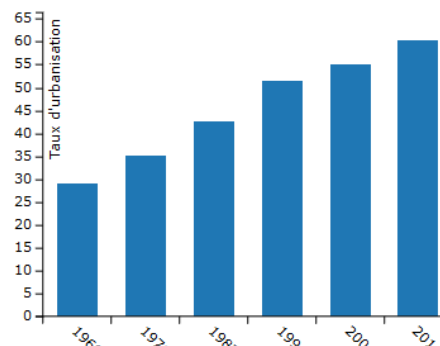
Population légale du Royaume aux recensements de 1960 à 2014 et taux d'accroissement annuels moyens

Année	Population	Taux (en %)
1960	11.626.470	-
1971	15.379.259	2,58
1982	20.419.555	2,61
1994	26.073.717	2,06
2004	29.891.708	1,38
2014	33.848.242	1,25
Accroissement global depuis 1960	22.221.772	2,00



Population légale du Royaume de 1960 à 2014 selon le milieu de résidence (taux d'urbanisation)

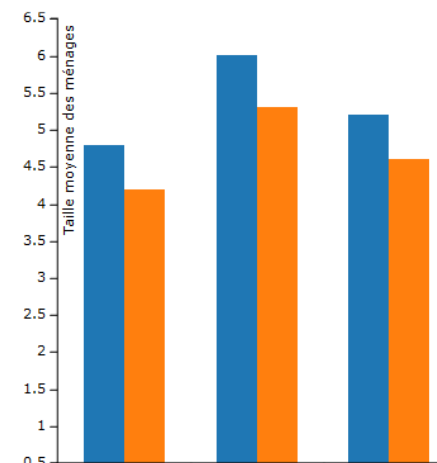
Année	Urbain	Rural	Ensemble	Taux d'urbanisation
1960	3.389.613	8.236.857	11.626.470	29,1
1971	5.409.725	9.969.534	15.379.259	35,1
1982	8.730.399	11.689.156	20.419.555	42,7
1994	13.407.835	12.665.882	26.073.717	51,4
2004	16.463.634	13.428.074	29.891.708	55,1
2014	20.432.439	13.415.803	33.848.242	60,3



© 2017 - HAUT-COMMISSARIAT AU PLAN

Taille moyenne des ménages selon le milieu de résidence au RGPH 2004 et 2014

Milieu de résidence	RGPH 2004	RGPH 2014
Urbain	4,8	4,2
Rural	6,0	5,3
Ensemble	5,2	4,6





Dynamic census atlases: the power of maps

- Graphic and interactive online tool developed in-house as well
- Same indicators as those provided by the first application
- Offers a new, creative, and inspiring way to read and understand data
- Maps formatting options are available: Language choice (Arabic/French), Number of indicators classes, Colors, Symbols, Chart legend, Filter




Dynamic census atlases: the power of maps

- Up to 2 indicators can be shown up at once on a map
- Maps can be produced for every administrative subdivision (Regions, Prefectures/Provinces, and Municipalities/Arrondissements)
- Maps are downloadable in Portable Network Graphics (PNG) format
- Link: <http://rgphencartes.hcp.ma>




Dynamic census atlases: the power of maps



المندوبية السامية للتخطيط
HAUT-COMMISSARIAT AU PLAN

Recherche
Filtre

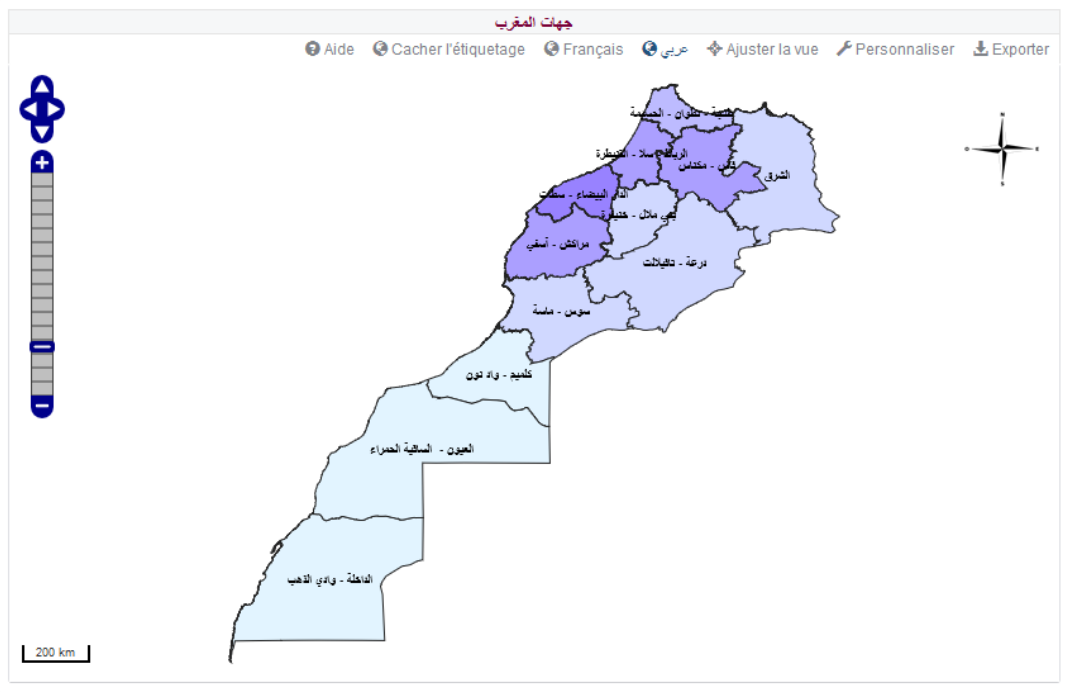
Rechercher une entité géographique (Région, province ou Commune) par nom :



إحصاء 2014
قيمة بلادنا
سكانها

جهات المغرب

Aide
Cacher l'étiquetage
Français
عربي
Ajuster la vue
Personnaliser
Exporter



Légende

مجموع عدد السكان بالبين

	أقل من 1400000
	من 1400000 إلى 2700000
	من 2700000 إلى 4100000
	من 4100000 إلى 5400000
	من 5400000 إلى 5400000
	أكثر من 5400000

Indicateurs sélectionnés (Cliquer sur pour choisir un indicateur)

Indicateur (Couleurs):

► Population municipale totale


Indicateur (Cercles): Afficher

⊙ Densité de la population(hab/km2)

Niveau géographique :

Royaume du Maroc

Population municipale totale par régions





National and regional reports, and thematic publications

- Besides indicators set out in the software tools, reports offer:
 - ▶ more detailed figures,
 - ▶ graphics,
 - ▶ data analysis,
 - ▶ comparisons over time from prior censuses,
 - ▶ and more details in statistical annex tables
- Reports are more likely to be archived



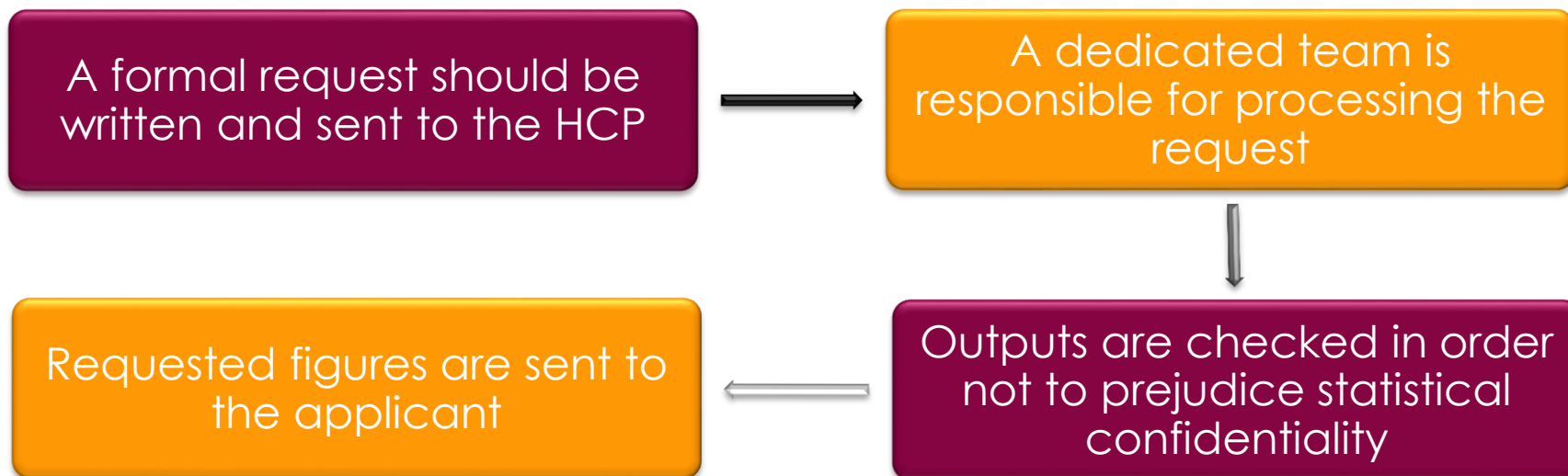
National and regional reports, and thematic publications

- Thematic publications give a specific and targeted vision of some phenomena and/or topics:
 - ▶ Geographic distribution of the population
 - ▶ Nomadic population
 - ▶ People with special needs
 - ▶ Foreign population (incoming)
 - ▶ Population's diplomas and school attainment, occupations, and employers industries and sectors (incoming)
 - ▶ More incoming thematic publications...
- All are accessible and downloadable from:
http://rgph2014.hcp.ma/downloads/Publications-RGPH-2014_t18649.html



Requests for specific additional information

- Some data users (Government departments, International organizations, Researchers, ...) need further statistics





Use of census data: better statistics, better decisions

- Collected information from census allows to:
 - ▶ evaluate public policies in terms of development and readjust them if necessary
 - ▶ assess economic and social progress,
 - ▶ establish population projection for better planning,
 - ▶ estimate enrolment numbers in order to determine the need for new schools
 - ▶ evaluate the level of realization of the MDGs,
 - ▶ situate ourselves in relation to SDGs
 - ▶ ...



Conclusion



Thank you