



Shared Prosperity Dignified Life



Monitoring SDG Data

NEDA JAFAR

JAFARN@UN.ORG

Data Availability
Arab SDG Gateway & Monitor
National SDG Reporting Platforms
Capacity Building

- CONTENT

Country Data in SDG Global Database

Available 14+ countries		Available <14 countries		Not available 0 countries	
	Indicator name		Indicator name		Indicator name
6.5.1	Degree of integrated water resources management implementation (%)		Proportion of transboundary river and lake basins and aquifers with an operational arrangement for water cooperation (%)	37%	2.4.1 Proportion of agricultural area under productive and sustainable agriculture
9.1.1	Freight volume, by mode of transport (tonne kilometres)	6.5.2			5.a.1 (a) Proportion of total agricultural population with ownership or secure rights over agricultural land, by sex; and (b) share of women among owners or rights-bearers of agricultural land, by type of tenure
9.c.1	Proportion of population covered by at least a 2/3/4 G mobile network (%)	6.6.1	Nationally derived extent of open water bodies (square kilometres)		9.1.1 Proportion of the rural population who live within 2 km of an all-season road
11.5.1	Number of directly affected persons attributed to disasters per 100,000 population (number)				11.2.1 Proportion of population that has convenient access to public transport, by sex, age and persons with disabilities
14.5.1	Average proportion of Marine Key Biodiversity Areas (KBAs) covered by protected areas (%)	11.5.1	Number of missing persons due to disaster		11.3.1 Ratio of land consumption rate to population growth rate
15.1.1	Forest area as a proportion of total land area (%)				11.6.2 Annual mean levels of fine particulate matter in cities (population weighted)
41%	Average proportion of Freshwater/ Terrestrial Key Biodiversity Areas (KBAs) covered by protected areas (%)	11.5.1	Number of people whose damaged dwellings were attributed to disasters		11.7.1 Average share of the built-up area of cities that is open space for public use for all, by sex, age and persons with disabilities
15.1.2	Above-ground biomass stock in forest (tonnes per hectare)	15.1.1	Land area (thousands of hectares)		14.1.1 (a) Index of coastal eutrophication; and (b) plastic debris density
15.2.1	Forest area annual net change rate (%)				14.2.1 Number of countries using ecosystem-based approaches to managing marine areas
15.3.1	Proportion of land that is degraded over total land area (%)	15.4.2	Mountain Green Cover Index		15.4.2 Mountain Green Cover Index
15.4.1	Average proportion of Mountain Key Biodiversity Areas (KBAs) covered by protected areas (%)				

Source: United Nations Global Database on the Sustainable Development Goals



Shared Prosperity Dignified Life



ARAB SDG GATEWAY

ARAB SDG MONITOR

Arab SDG Monitor
www.arabsdgmonitor.unescwa.org



**LEAVE NO ONE
BEHIND**

Leave No One behind

A collection of dashboards that provides statistical information



SDG Data Portal

<https://data.unescwa.org>



E-Handbook on SDG Metadata

www.unescwa.org



Finance for Development

Text



SDG Knowledge & Learning

<https://arabsdg.unescwa.org/>



SDG Events

The 2030 Agenda for Sustainable Development in the Arab Region's Events



Evidence-Based Policies

Text

<http://arabsdggateway.unescwa.org/>



ARAB SDG MONITOR

← Arab SDG Gateway



<http://arabsdgmonitor.unescwa.org/>



ARAB SDG M ONITOR

[Arab SDG Gateway](#)



15 Life on land

15 LIFE ON LAND



Goal 15

Protect, restore and promote sustainable use of terrestrial ecosystems, sustainably manage forests, combat desertification, and halt and reverse land degradation and halt biodiversity loss

9/12
TARGETS WITH AVAILABLE INDICATORS

11/14
INDICATORS WITH DATA AVAILABLE

79%
INDICATOR COVERAGE IN REGION





15.1 TERRESTRIAL AND INLAND FRESHWATER ECOSYSTEMS

By 2020, ensure conservation, restoration & sustainable use of terrestrial & inland freshwater ecosystems & their services, in particular forests, wetlands, mountains & drylands

Forest area as a proportion of total land area (%)

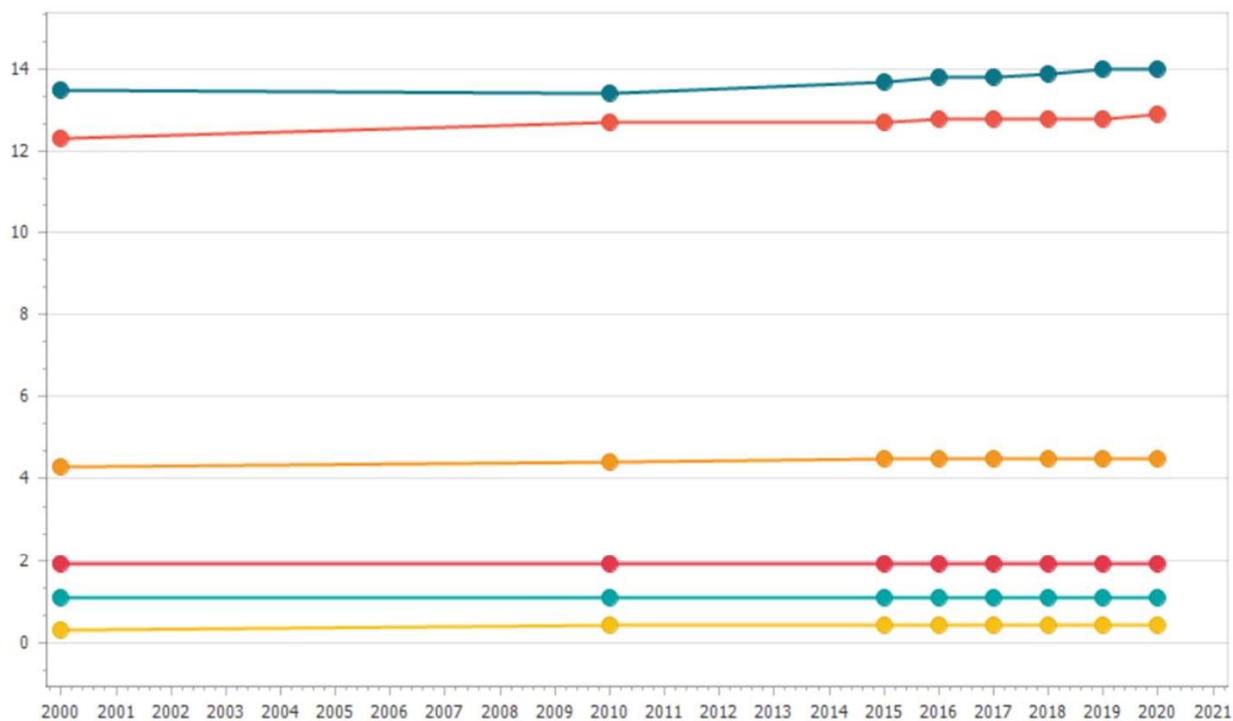
Forest area as a proportion of total land area (%)

Trend

Trend Data

Base year Comparison

Latest Data



- ☐ Algeria
- ☐ Bahrain
- ☐ Comoros
- ☐ Djibouti
- ☐ Egypt
- ☒ Iraq
- ☒ Jordan
- ☒ Kuwait
- ☒ Lebanon
- ☐ Libya
- ☐ Mauritania
- ☒ Morocco
- ☐ Oman
- ☐ Qatar
- ☐ Saudi Arabia
- ☐ Somalia
- ☐ State of Palestine
- ☐ Sudan
- ☐ Syrian Arab Republic
- ☒ Tunisia
- ☐ United Arab Emirates
- ☐ Yemen



Definition / Calculation method:

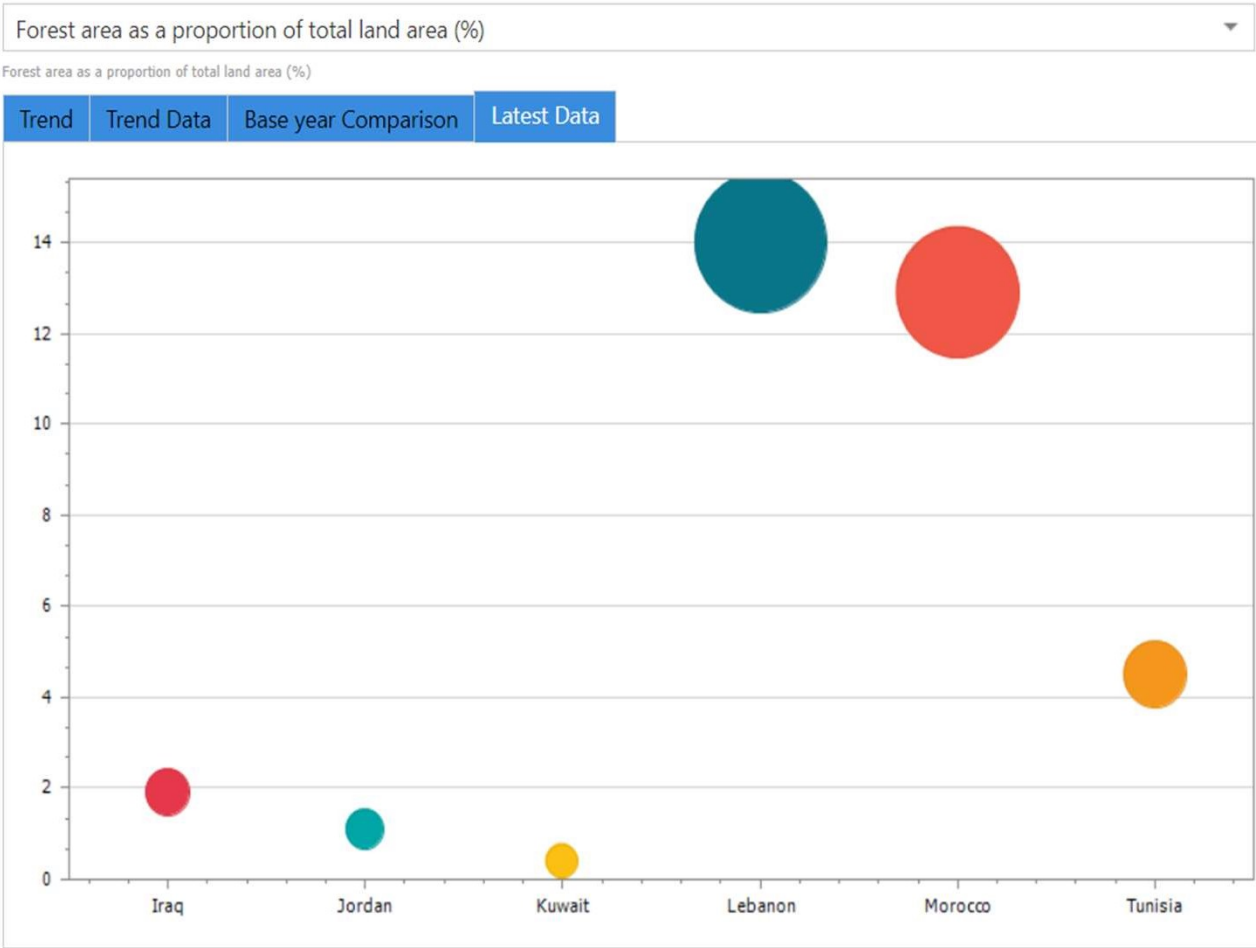
The indicator provides a measure of the relative extent of forest in a country. It is computed by dividing Forest area (reference year) by the Land area (2015), multiplied by 100.



15.1

TERRESTRIAL AND
INLAND FRESHWATER
ECOSYSTEMS

By 2020, ensure conservation, restoration & sustainable use of terrestrial & inland freshwater ecosystems & their services, in particular forests, wetlands, mountains & drylands



- ☐ Algeria
- ☐ Bahrain
- ☐ Comoros
- ☐ Djibouti
- ☐ Egypt
- ☒ Iraq
- ☒ Jordan
- ☒ Kuwait
- ☒ Lebanon
- ☐ Libya
- ☐ Mauritania
- ☒ Morocco
- ☐ Oman
- ☐ Qatar
- ☐ Saudi Arabia
- ☐ Somalia
- ☐ State of Palestine
- ☐ Sudan
- ☐ Syrian Arab Republic
- ☒ Tunisia
- ☐ United Arab Emirates
- ☐ Yemen

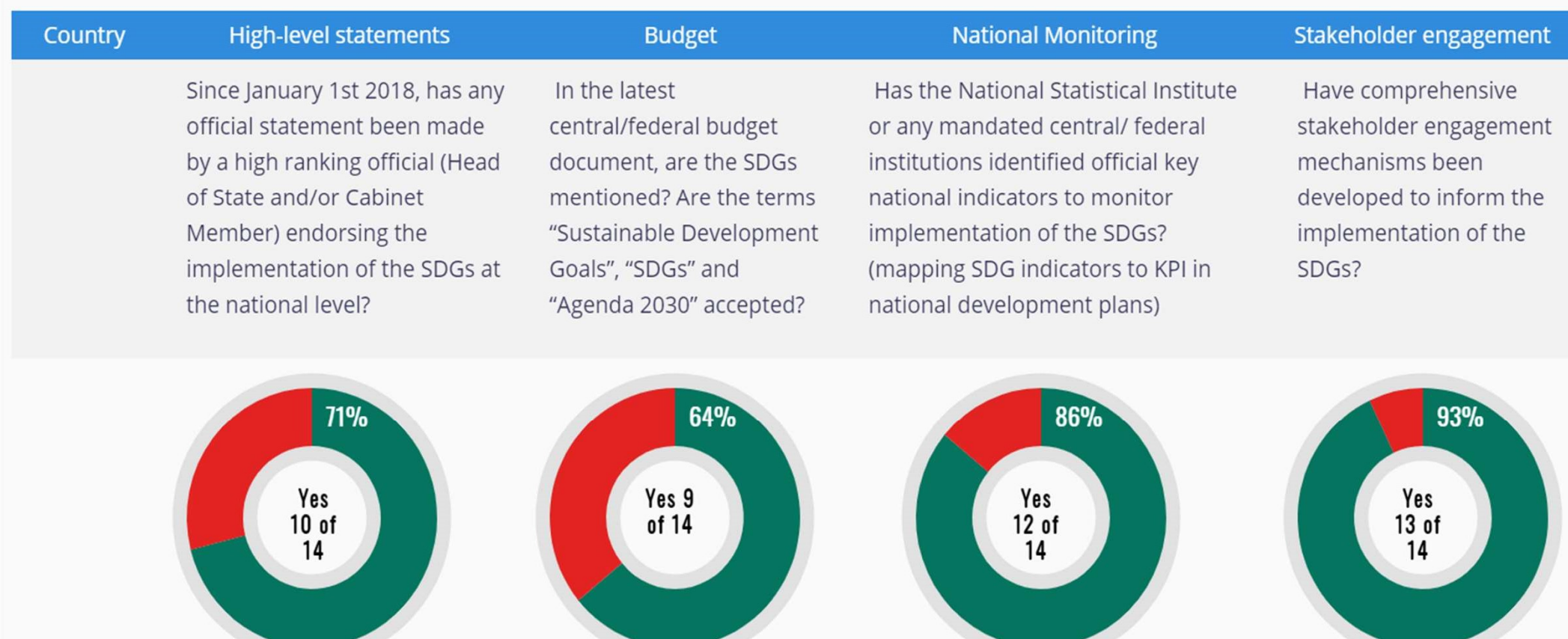


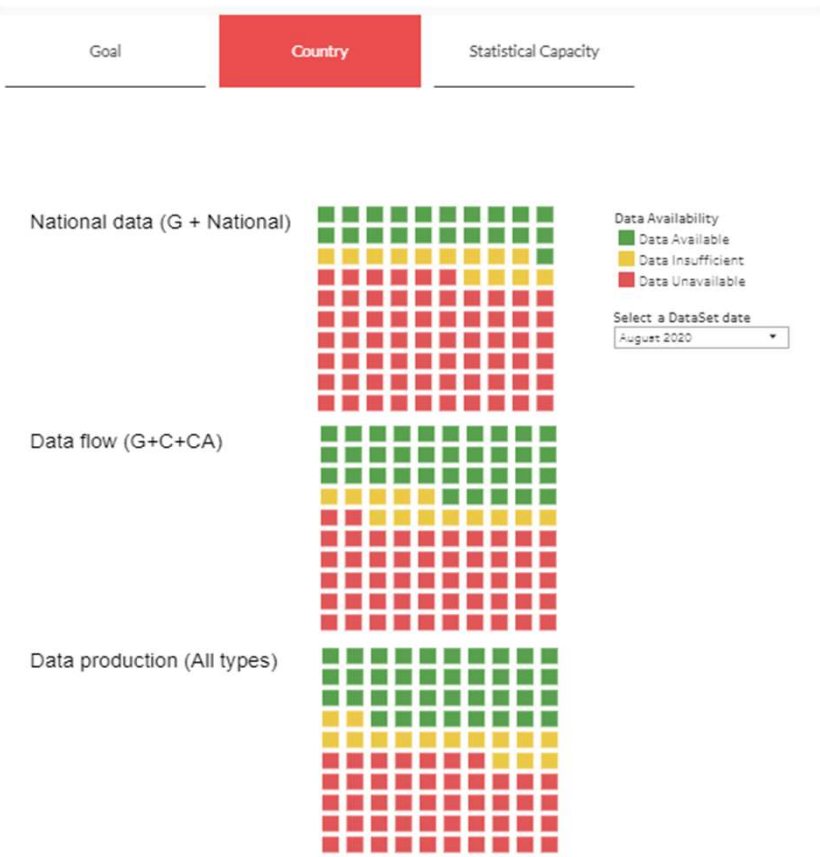
Definition / Calculation method:

The indicator provides a measure of the relative extent of forest in a country. It is computed by dividing Forest area (reference year) by the Land area (2015), multiplied by 100.

SDG Readiness

Institutional Environment





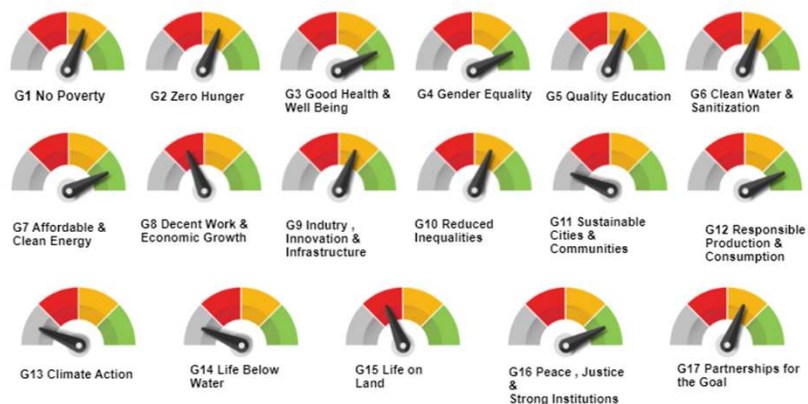
TARGET TRACKER

CURRENT STATUS

PROJECTED STATUS



GOAL TRACKER



Algeria

SCORECARD

	Latest	Trend 2000+	Target	Gap
Goal 1 No Poverty				
[ILO] Proportion of employed population covered in the event of work injury, by sex (%)	53.80	→	■	
[ILO] Proportion of mothers with newborns receiving maternity cash benefit (%)	11.20	→	■	
[ILO] Proportion of population above statutory pensionable age receiving a pension, by sex (%)	63.60	↑	■	36.40
[ILO] Proportion of population with severe disabilities receiving disability cash benefit, by sex (%)	3.60	→	■	
[ILO] Proportion of unemployed persons receiving unemployment cash benefit, by sex (%)	8.80	↑	■	
Employed population below international poverty line, by sex and age (%)	0.10	→	■	0.10
Number of deaths and missing persons attributed to disasters (number)	19.00	→	■	19.00
Number of deaths and missing persons attributed to disasters per 100,000 population (number)	0.04	→	■	0.00
Number of deaths due to disaster (number)	19.00	→	■	19.00
Proportion of population below international poverty line (%)	1.00	→	■	1.00
Proportion of population living below the national poverty line (%)	5.50	→	■	0.50
Proportion of population using basic drinking water services, by location (%)	93.56	↑	■	6.44

Latest : latest year available

Trend 2000+

- ↑ Increase since 2000+
- ↓ Decrease since 2000+
- No change

Target

- On-track
- In progress
- Off-track
- No target

[Back to Arab SDG Monitor](#)



KUWAIT SDG MONITOR



14 Life below water

 [Back to Arab SDG Monitor](#)



KUWAIT SDG MONITOR



The world's oceans – their temperature, chemistry, currents and life – drive global systems that make the Earth habitable for humankind. How we manage this vital resource is essential for humanity as a whole, and to counterbalance the effects of climate change.

Life Below Water



National Data



[Back to Arab SDG Monitor](#)



KUWAIT SDG MONITOR



14 LIFE
BELOW WATER



Goal 14

Conserve and sustainably use the oceans, seas and marine resources for sustainable development

3/10

TARGETS WITH AVAILABLE INDICATORS

3/10

INDICATORS WITH DATA AVAILABLE

30%

INDICATOR COVERAGE IN REGION



[Back to Arab SDG Monitor](#)



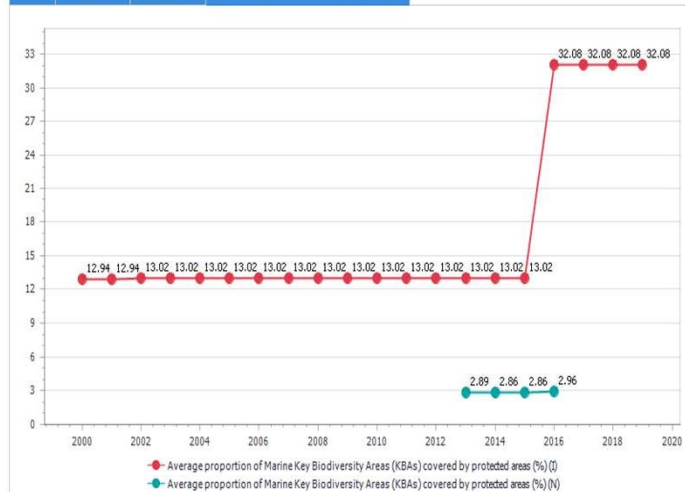
KUWAIT SDG MONITOR



14.5 CONSERVATION OF COASTAL AND MARINE AREAS

By 2020, conserve at least 10 per cent of coastal and marine areas, consistent with national and international law and based on the best available scientific information

Trend Trend Data Latest Data National / International Comparison



- ☒ Average proportion of Marine Key Biodiversity Areas (KBAs) covered by protected areas (%)
- ☐ Protected marine area (Exclusive Economic Zones) (square kilometres)



National Definition / Calculation method:

disaggregation: Average proportion of Marine Key Biodiversity Areas (KBAs) covered by protected areas (%)

International Standard Definition / Calculation method:

disaggregation: Average proportion of Marine Key Biodiversity Areas (KBAs) covered by protected areas (%)

[Back to Arab SDG Monitor](#)

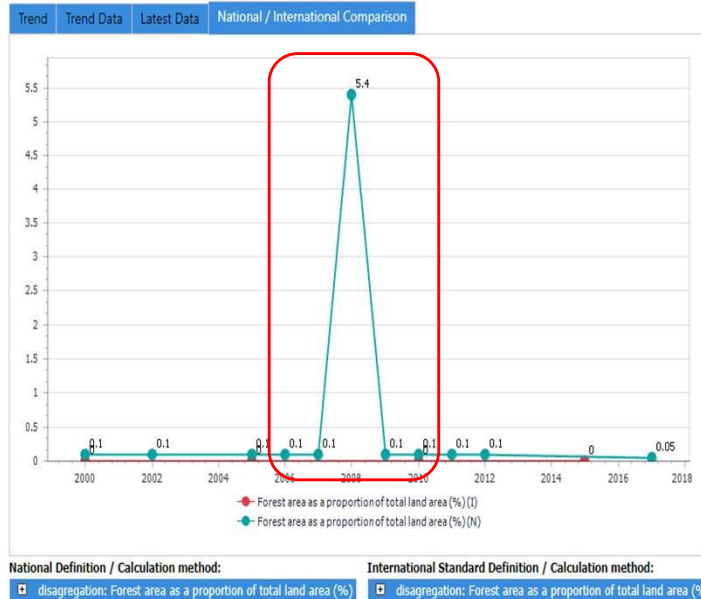


EGYPT SDG MONITOR



15.1 TERRESTRIAL AND INLAND FRESHWATER ECOSYSTEMS

By 2020, ensure the conservation, restoration and sustainable use of terrestrial and inland freshwater ecosystems and their services, in particular forests, wetlands, mountains and drylands, in line with obligations under international agreements



- Forest area (KMSQ)
- Forest area as a proportion of total land area (%)



Capacity Building



- National data verification
 - Time series
 - Sources
 - Quality
- National SDG reporting platforms
- Sustainability and maintenance
 - Training SDG focal points and IT
 - Training on SDMX
- Mainstreaming in NSS
 - Data and metadata exchange
 - Modernization of NSS

Thank you

