

Gender Mainstreaming in the MINARET Project: Nature-Based Solutions for Sustainable Development

**National Workshop on “Gender Empowerment and Entrepreneurial
Development in the Rural Context: The role of renewable energy”
Sheraton Hotel, Amman, 20-21 November 2019**





MINARET

“The MENA Region Initiative As a Model of NEXUS Approach and Renewable Energy Technologies”

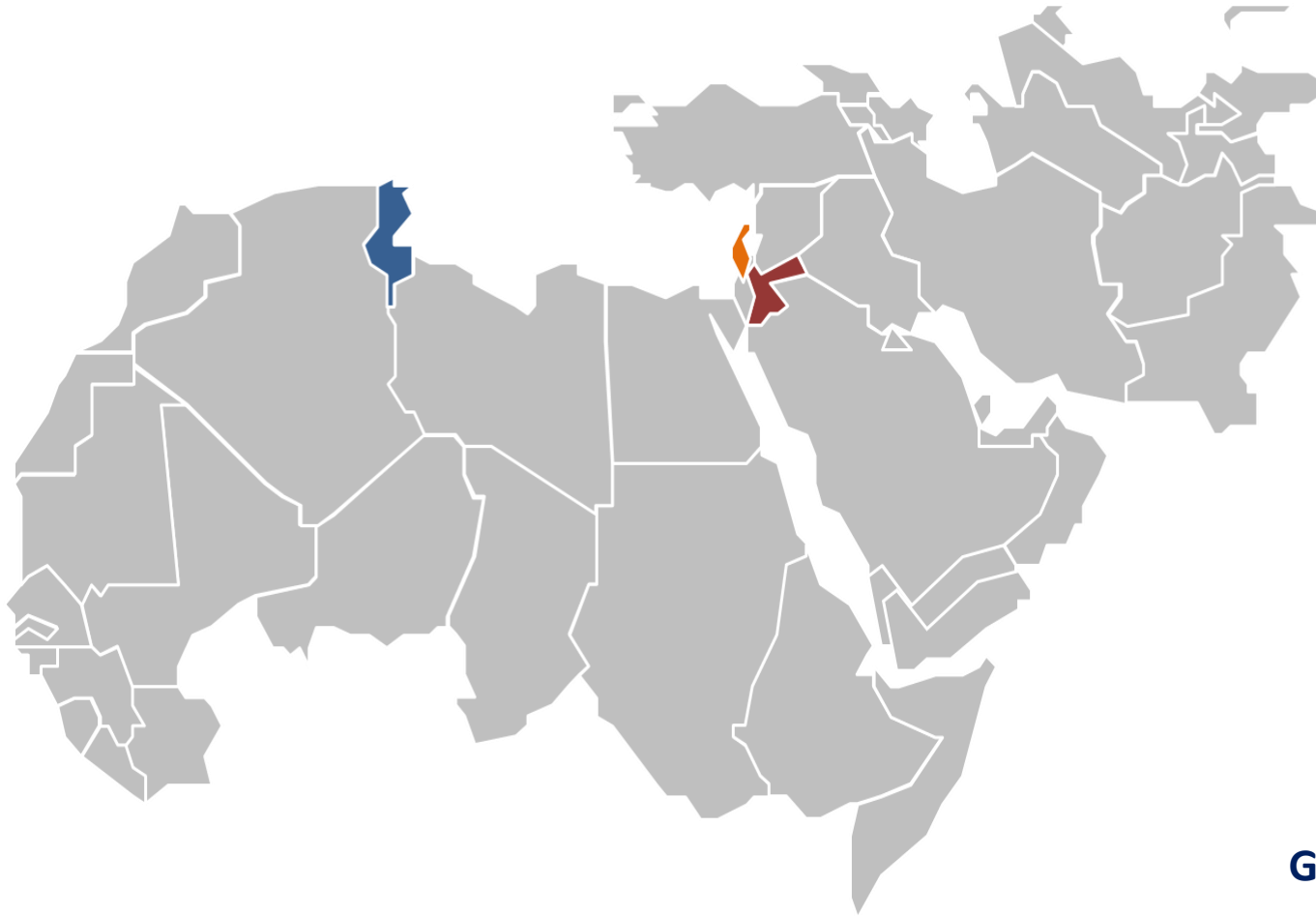
Main Objective

The overall goal of MINARET is to “Strengthen regional cooperation within the MENA region through implementing the NEXUS approach (energy/water/food) integrated with renewable energy technologies at the municipality level, to mitigate climate change impacts and combat poverty”.

Implementing Partners

 	<p>The Royal Scientific Society (RSS) is the largest applied research institution, consultancy, and technical support service provider in Jordan and considered as a regional leader in the fields of applied science & technology.</p> <p>NERC is one of the main institutions offering their Energy expertise and access to synergies with a number of centers working various verticals such as water & environment, construction.</p>
	<p>International Union for Conservation of Nature</p> <ul style="list-style-type: none"> • IUCN is the world's oldest and largest global environmental organization • Mission: valuing and conserving nature, ensuring effective and equitable governance of its use.
	<p>Horizons for Green Development (HFGD) is a Jordanian non-profit organization</p> <ul style="list-style-type: none"> • committed to empowering communities through sustainable development. • Mission: contribute to alleviating water shortages, increased use of RE and EE and improved food securities.

Targeted Countries



Tunisia



Monastir Municipality

Lebanon



Jdaideh Municipality

Jordan



Greater Karak Municipality

Target Sustainable Development Goals



Introducing MINARET



- A four year project, established in 2017.
- Funded by SIDA
- First project of its kind in the MENA region implementing the NEXUS approach
- Adapts a “bottom-up” approach, holistic stakeholder analysis and consultation.

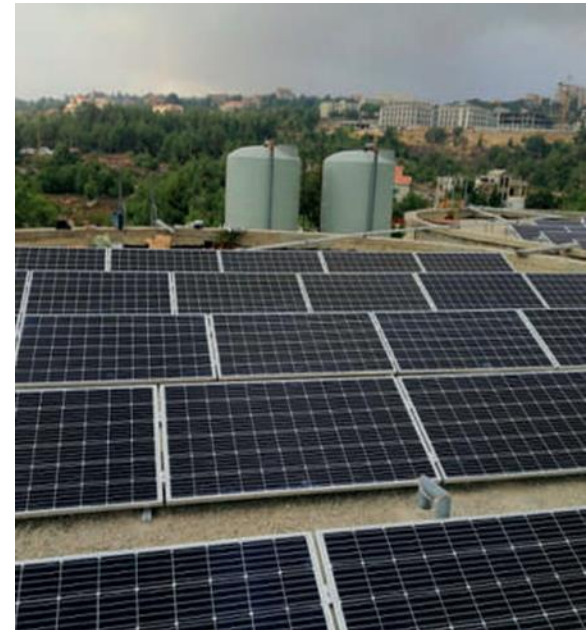


SWEDISH INTERNATIONAL DEVELOPMENT
COOPERATION AGENCY

Specific Objectives

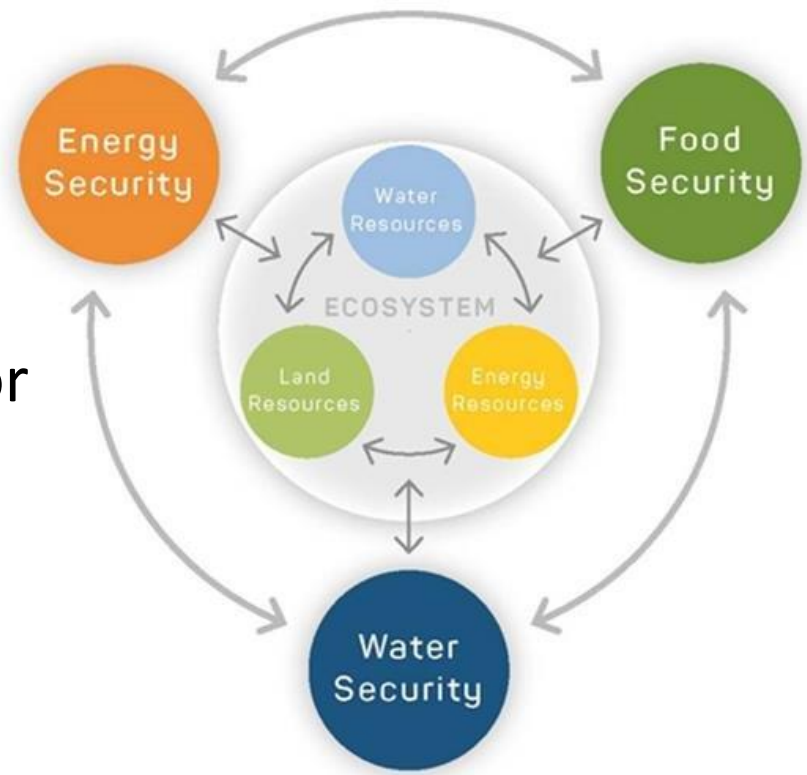
- To build the municipalities' resilience for climate change.
- Institutional strengthening and capacity building.
- To promote inter-municipal regional cooperation.
- To include women, youth and marginalized groups in the development and implementation of the NEXUS approach
- To develop a MENA dialogue platform focusing on sharing knowledge, about similar initiatives.

nexus
MENA

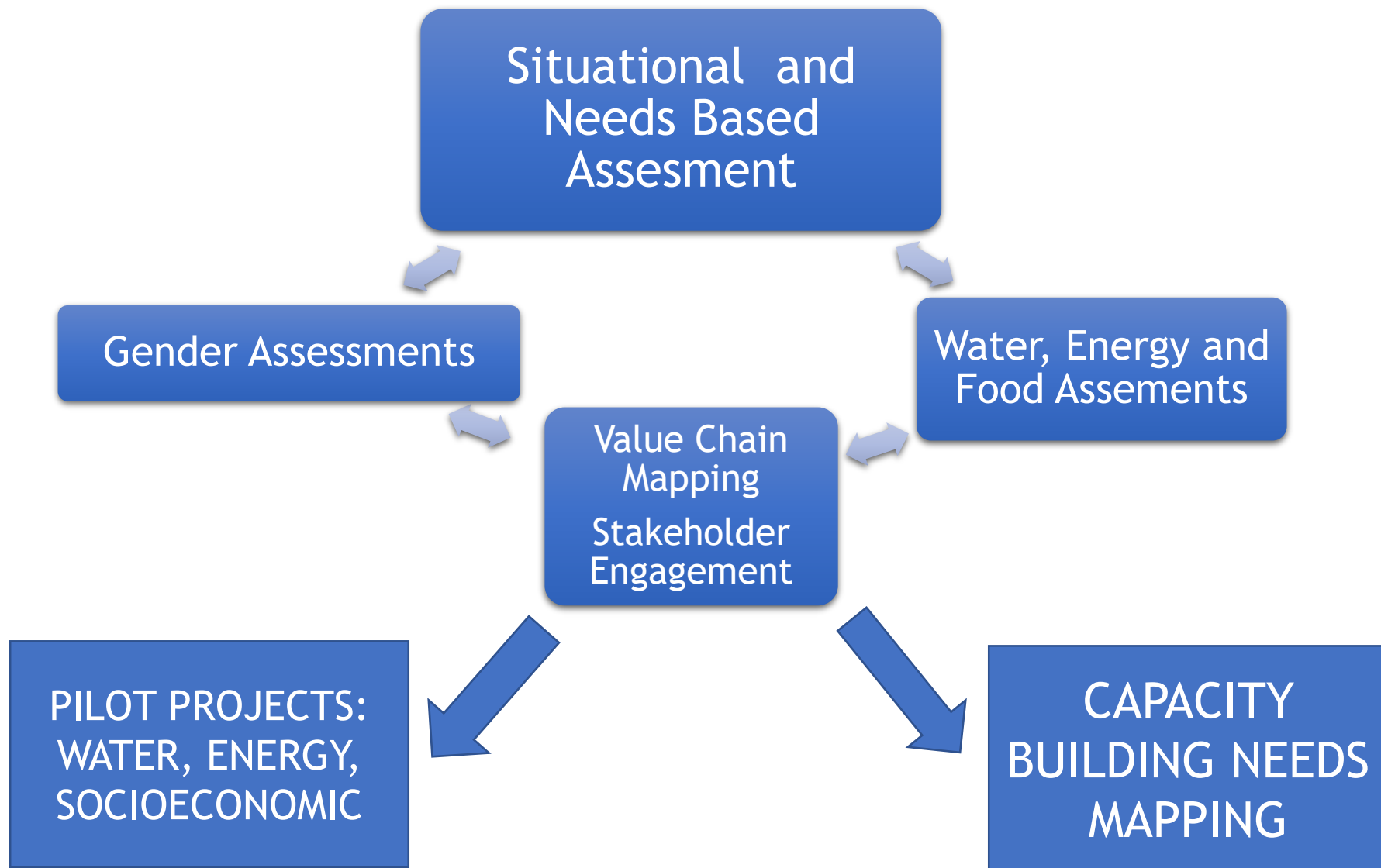


The WEF NEXUS Approach

- The water, energy, and food (WEF) Nexus defines the inextricable linkage between the three sectors.
- The three sectors (water, energy and food security) are necessary for the benefit of human well-being, poverty reduction and sustainable development.
- Understanding the relationship between different sectors can help us figure out how to deal with problems, since all sectors are tied together in many ways



PROJECT LOGIC



FINDINGS FROM GENDER ASSESSMENTS

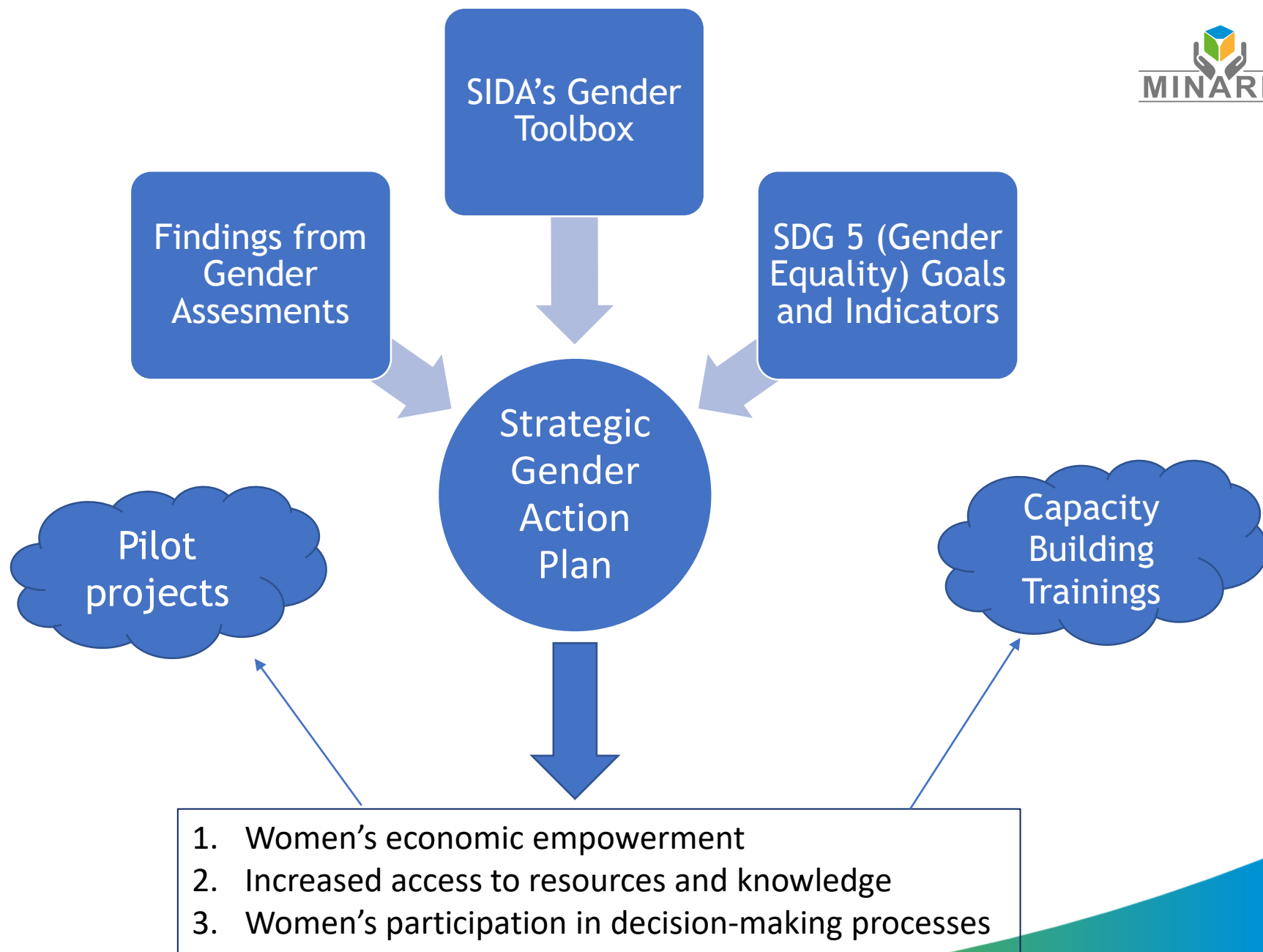


- Gender roles and responsibilities regarding the access, use, and decision-making processes surrounding WEF:
 - **Women** are primary users of water, gas and energy because of their domestic work. Important actors in agriculture and food security.
 - **Men** are the primary decision-makers when it comes to making important decisions regarding the conservation and access to these resources.



Gender Assessment in Monastir, Tunisia

- Municipality members lacking gender sensibility and knowledge .
- Citizens lacking knowledge regarding climate change and renewable energy.
- Existing gender inequality in each country.
- Legal framework promoting gender equality in each country.
- Economic needs and realities of the women and men from each municipality.



The Results



Capacity building trainings on gender, water, energy, agriculture.



Series of project promoting use of renewable energy, water and energy efficiency, while contributing to gender equality by including a gender perspective that results in the economic empowerment of women, more job opportunities for all, and an increased access to information and resources of all beneficiaries.





Thank You!