

()

2008



Distr.
GENERAL

E/ESCWA/EDGD/2008/4
22 December 2008
ORIGINAL: ARABIC

()

2008



2008

E/ESCWA/EDGD/2008/4
ISSN. 1726-5967
ISBN. 978-92-1-628070-3
08-0438

Sales No. A.09.II.L.1

2008

.()

1		
2		
2	-	
2	-	
13		-
13	-	
16	-	
21	-	
25	-	
27	-	
29	-	
32 :		-
32	-	
33	-	
35	-	
36	-	
42		-
42 :	-	
44	-	
53		-
53	-	
54	-	

4(2007-2006 2002)	
5 (2007-2005) ()	-2
<hr/>		
5 (2007-2004)	-3
7 (2007-2005)	-4
8 (2007-2005)	-5
11 2009	-6
13	-7
14 (2007-2003)	-8
15 (2007-2002)	-9
16 (2007-2000)	-10
17 (2007-2000)	-11
18 (2007-2000)	-12
18 (2007 2006)	-13
		-14
20 (2007 2006 2005)	-15
		-16
22 (2007 2006 2005)	
25 (2007-2001)	-16
26 (2007-2002)	-17
27 (2007-2001)	-18
30 (2006-2001)	-19
34 (2007-2002)	-20
35 (2005 -)	-21
36 (2005)	-22
36 (2005)	-23
37	-24
44 (2007 2006)	-25

48(2006 2005)	-26
49(2006 2005)	-27
49 (2006 2005)	-28

()

122008	-1
21	-2
24	-3
40	-4
47	-5
51 :	-6

6 2007	-1
9 (2007 2006 2000)	-2
10 (2007 2006 2000)	-3
16 (2007-2000)	-4
19 (2007 2006)	-5
19 2007	-6
23(2007 2006)	-7
29 2007	-8
30 2006	-9

2007

2007

10.5
.2006

13.1 2007

2007

16

2007 2006 4.3 4.25

2007 2.7 2.9

.2006

1.2 2006

2007

.2006

2007

9.3

.2007

9.8 2006

28.4 2007

26.1
.2006

()

2006

8.2

2007

83

2007

2007

11

.19.2

100

49.2

100

.8.2

100

2.4

6.1

6.7

8

2006

8.2

0.7

2008
2007

2007	29	50	.2007	-	-
	5		2007	2.7	2006
				6.6	7.2
			4.3		
	1		5.4	5.6	
4.0	2002	1.2	4.9	4.0	
		2007		26.1	28.4
			10.5	13.1	
				(1) 2007 2006
			2007	4.4	.2006
				23.2	
			2007	22.4	2006
				()	
		-1			
	2007				
	2006	1.83			
	(2)	1.4	308	2006	355.2
	67.8		20	2007	
.2006	66.7	2007			
					(1)
	12.7		1		
	2007				

	31						12.2
	2007	48		29.3	2007	27.3	
	66	2006	51	61	2006		
94		118	116	1.64			
.21	17		110		89	2007	
					1.83		
		(3)			11	greenfield investment	
						88.8	
					1.1		
						2007	
						(1)	4
							-2
					.2007		
				10	6		
					12		
						20	
(1)							
				20			

()
: (2007-2006 2002) -1

()			()									
2007	2006	2002	2007	2006	2002	2007			2002			
10.2	10.2	10.2	3.5	3.5	3.5	51.8	5.3	1.8	51.8	5.3	1.8	()
5.01	5.01	4.38	3.56	3.57	2.42	6625	332	236	6218	272	150	()
2.86	2.65	2.15	2.28	2.09	1.71	54347	1557	1238	31614	678	541	()
7.24	6.63	5.57	3.58	3.37	3.53	6049.5	437.8	216.7	2477.2	137.9	87.4	()
4.31	4.25	3.09	3.47	3.42	2.44	28271.6	1217.4	981.2	13060.2	403.0	318.3	()
5.36	5.57	5.22	3.60	3.83	3.76	903	48.4	32.5	703	36.7	26.4	()
2.92	4.71	2.51	1.89	4.57	1.73	950	27.8	17.9	474	11.9	8.2	()
3.95	4.92	1.19	3.34	3.96	0.70	1833324	72470	61143	678751	8084	4737	()
9.21	8.74	9.08	6.01	5.64	6.11	355438	32752	21372	169502	15391	10352	()
26.05	28.38	29.02	22.41	24.36	25.79	86.1	22.4	19.3	65.4	19.0	16.9	()
50.29	50.74	57.92	46.23	46.63	53.67	1331.7	669.7	615.6	1121.2	649.4	601.8	()
10.49	13.14	11.07	9.69	9.62	7.66	2940.0	308.4	284.9	2599.3	287.7	199.0	()
29.09	29.57	32.44	25.65	26.26	26.44	188.1	54.7	48.2	176.8	57.4	46.7	()
8.67	8.45	..	7.42	7.22	..	85.3	7.4	6.3	..	6.9	5.7	()
..	4.00	3.34	8.7	7.3	..	6.5	5.5	()

: _____

: 14 2008 ()
()
()
()
()
()
2006 2005 2007 2006 ()

(2007-2005)

-2

()		()			
2007	2006	2007	2006	2005	
(40.31)	84.17	1937	3245	1762	
3.42	17.56	(*)13253	12815	10901	
(39.76)	177.88	1756	2915	1049	
(51.15)	323.53	1618	3312	782	
(7.24)	66.05	1665	1795	1081	
0.00	0.00	(*)1	(*)1	(*)1	
26.23	93.93	2541	2013	1038	
47.50	(5.66)	885	600	636	
18.90	645.45	195	164	22	
(31.21)	53.62	2436	3541	2305	
46.88	300.00	(*)141	(*)96	(*)24	
16.97	(25.63)	(*)448	383	515	
43.54	(5.80)	2377	1656	1758	
(44.74)	(19.15)	(*)21	38	47	
(32.54)	41.05	1138	1687	1196	
(21.66)	(74.68)	123	157	620	
3.87	(1.90)	2845	2739	2792	
15.28	86.81	11578	10043	5376	
5.18	(16.84)	2577	2450	2946	
32.16	51.98	24318	18400	12107	
(1.29)	(82.06)	153	155	864	
(61.72)	(567.95)	(*)464	1212	(259)	
4.40	45.95	72470	69417	47563	
29.93	47.18	1833324	1411018	958697	
32.57	53.92	1247324	940861	611283	
21.01	30.51	499747	412990	316444	

.UNCTAD, *World Investment Report 2007*, Annex table B.1 : _____

(*) () : _____

-3

(2007-2004)

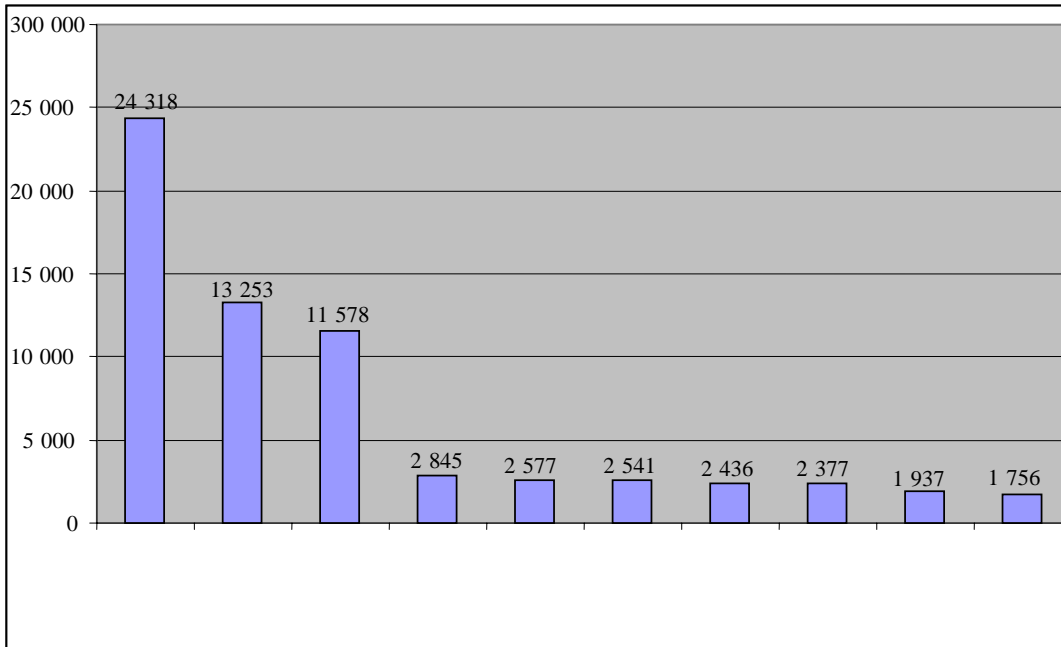
2007	2006		2005		2004		
6	65	7	64	13	61	51	
34	11	22	12	18	22	28	
12	30	12	29	21	32	30	
42	66	44	65	81	65	77	
118	68	116	68	114	68	101	
72	35	77	37	96	43	115	
100	96	105	92	104	89	118	
21	121	17	118	15	125	20	
48	51	61	55	65	57	100	
110	7	94	8	63	9	61	
134	29	135	31	136	41	140	
10	82	13	76	10	68	9	
20	83	31	82	67	79	102	
78	91	78	93	70	90	66	
51	28	66	28	92	29	127	
93	106	96	99	139	92	121	

.UNCTAD, *World Investment Report 2008*, Annex table A.I.10 : _____

2007

-1

()



.UNCTAD, *World Investment Report 2008*, Annex table B.1 : _____

(26.2+) _____ -3
 (47.5+)

(15.3+) (43.5+)
 (32.2+) 2007 2006

2007

(+47)

4.4

2006

46

(2) 2007

30

21

2007

(16) (33.6)
 (18.2) (40.3-)
 (51.1-) (40-)
 (32.5-) (31-)
 (62-)

3.95	4.92	4.96	
------	------	------	--

.2 : _____

_____ -5	

_____ 2007	

26

2007

.2006

94

40

45) (43) 2007
 64.1) (122) (
 ((43) (
 ()

_____ -4	

2006

2007

()

14.5 2006

16.81

2007

3.95 2006

4.92

(.4) 2007

27

30

2007

.2006

-4

(2007-2005)

()

(.5)

2007	2006	2005	
14.50	16.81	15.03	

10
15
11 2007
.2007 12.6

-5

(2007-2005)

()			()		
2007	2006	2005	2007	2006	2005
42.7	85.1	54.9	91.9	114.2	39.8
26.7	30.4	38.6	25.5	22.0	21.1
44.7	92.2	39.8	65.9	71.0	64.1
19.6	45.5	12.1	74.9	71.0	56.1
5.1	6.3	4.7	9.0	8.9	8.1
1.6	1.3	1.6	5.8	6.3	6.5
25.3	23.0	14.4	11.5	7.5	1.4
10.3	7.5	7.6	25.6	28.7	⁽¹⁾ 12.12
121.7	111.4	42.0	61.6	30.0	15.4
22.9	42.2	41.3	30.0	30.3	28.3
26.0	19.8	5.1	9.7	5.1	2.3
5.9	5.6	7.4	2.2	3.0	1.3
39.7	30.4	30.2	14.7	10.8	13.3
1.8	1.8	4.4	23.4	25.2	25.3
5.4	1.0	9.1	10.7	14.4	16.2
0.8	0.8	1.7	0.8	0.8	0.9
64.1	66.8	65.8	85.7	80.9	68.5
42.7	49.8	32.2	39.6	36.4	31.0
12.2	13.0	9.8	44.3	52.0	43.9
30.1	29.7	23.2	20.2	14.9	⁽¹⁾ 8.5
19.0	19.5	97.8	69.1	61.7	35.3
10.3	28.1	(9.0)	11.0	3.0	6.5
14.8	12.9	9.7	27.9	24.8	22.7
12.6	12.5	11.4	29.8	26.7	27.0

.UNCTAD, *World Investment Report 2008*, Annex table B.3 : _____

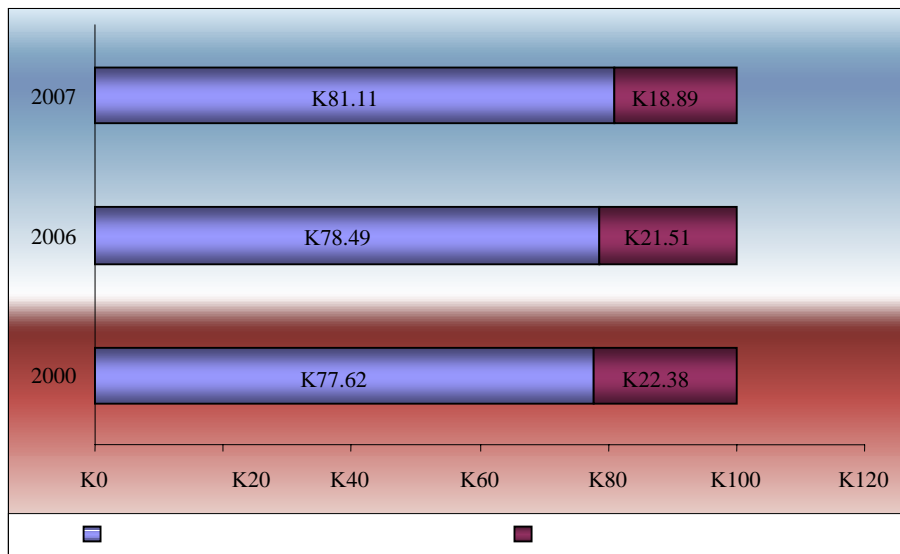
() : _____

	2000	2007	2006	2007
	92	37	40	(92)
	66	74		(75)
1	1.6			(86)
		(2)		(66)
				(62)
				(69)
				44
				25
				26)
				40) (44)
				(
				20
				(9)
				(2)
				(11)
	81	19	2007	(10)
	78.5			(11)
	2000	77.6	2006	(14)
				0.8)
				28
				7
				2007
				30

(2)

(2007 2006 2000)

-2



.UNCTAD, *World Investment Report 2007 and 2008*, Annex table B.2 : _____

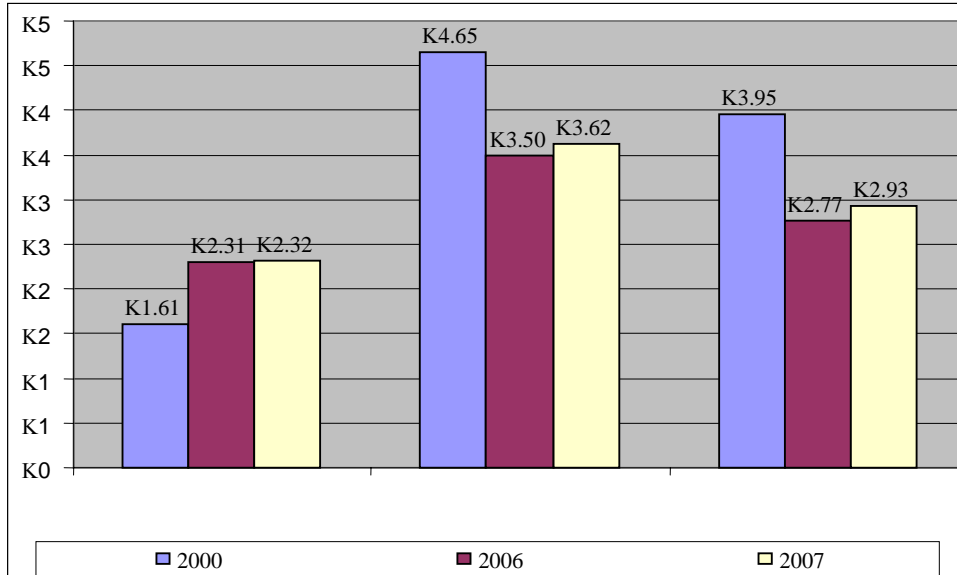
: _____

: _____

1.6
2007 2.3 2000

-3

(2007 2006 2000)



.UNCTAD, *World Investment Report 2007 and 2008*, Annex table B.2 : _____

: 10 () - : _____

) : 4 () -

.(

-7

2009

/

13

2008 / 2007

.(3)2008 2007

2008 2007

World Bank, International Finance Corporation, (3)
Doing Business in the Arab World 2009. Available at:
www.doingbusiness.org.

18
46
57
160

16
37
52
73

(6)

2009

-6

))					
()	()	()		()	()				
37.5	1.5	635	44	14.9	12	7	16	1	
63.2	2.5	635	48	0.6	9	7	18	2	
52.7	2.8	570	43	9.1	6	6	37	3	
10.2	5.1	607	50	13.4	17	8	46	4	
34.5	4.2	566	50	1.3	35	13	52	5	
35.1	4.0	598	51	3.6	14	7	57	6	
7	1.3	565	39	7.9	11	10	73	7	
28.6	3.0	520	37	93.0	13	7	98	8	
19.0	4.0	721	37	87.5	11	5	99	9	
27.3	4.3	689	39	60.4	14	10	101	10	
16.8	4.2	1010	42	18.3	7	6	114	11	
35.1	1.8	615	40	10.2	12	6	128	12	
0.0		700	44	69.1	49	11	131	13	
41.7	2.5	630	47	10.8	24	14	132	14	
29.5	4.1	872	55	18.2	17	8	137	15	
0.0		810	53	50.8	39	10	147	16	
0.0		520	51	150.7	77	11	152	17	
15.9	5.0	1225	40	200.2	37	11	153	18	
0.0		506	43	188.6	23	11	155	19	
6.7	8.0	370	46	33.9	19	9	160	20	

.World Bank, International Finance Corporation, *Doing Business in the Arab World 2009*. Available at: www.doingbusiness.org ; _____

810
1010
370

53
42
46

19
271
12
7

(6)
(1)

2008		2007		2008	
6.5	28	1	6.0	1	
5.9	35	2	5.7	2	
5.5	41	4	4.7	3	
5.4	43	3	5.0	4	
5.1	47	4	4.7	5	
4.4	62	7	4.2	6	
4.3	65	6	4.3	7	
3.5	80	9	3.4	8	
3.5	80	8	3.5	8	
3.2	92	12	2.8	10	
3.0	102	10	3.0	11	
2.8	115	11	2.9	12	
2.6	126	13	2.5	13	
2.3	141	13	2.5	14	
2.1	147	15	2.4	15	
1.6	173	16	1.8	16	
1.3	178	17	1.5	17	

: 2008 (Transparency International) : www.transparency.org

-

(Principal Component Technique)

-

14.89 :
 12.82 34.07 16 : 38.22 (4) (2) (1) (3)
 .2007-2003
 (4) (7)

-7

	(1)	
(2008 /)	(2)	
2007		
2007 2006 2005	(1)	
2007 2006		
.2008	(2)	
.2008	(3)	
2007		
(IFS)	(1)	
.2008	(2)	
/ 17-15)	(3)	
.(2006		
2006 :		
	(1)	
.2006 2004	(2)	
	(3)	
.2008 2007		

(4)

2006

:

(E/ESCWA/GRID/2006/3)

www.escwa.un.org

76 8
2007-2003

2007

2007 37

3 44

58

2.5 17

2007

70

2006 850 2007

2007 90

32

40

2.3 10

.2007-2003

2007

.2006

48

(2007-2003)

-8

2003		2004		2005		2006		2007	
7.4116	1	6.0676	1	4.8190	3	8.6849	1	7.9948	1
5.1284	3	5.7334	2	5.3524	1	6.6518	2	7.6863	2
1.5900	7	4.5415	4	3.7489	5	5.4281	4	5.4278	3
5.9261	2	4.7914	3	3.8627	4	5.1860	3	5.2313	4
4.0285	4	2.9530	5	5.1627	2	2.3161	5	2.5105	5
2.0626	5	1.2212	9	0.9066	9	2.1113	6	2.2313	6
1.0925	10	0.8842	11	0.6307	12	2.0316	7	2.0681	7
0.8535	13	1.3038	8	1.0301	8	1.4534	8	1.4958	8
1.2873	8	1.3591	7	1.2187	7	1.2056	10	1.2797	9
1.0389	11	0.5441	12	0.7987	11	0.9517	11	1.1291	10
2.0494	6	1.8204	6	1.7505	6	0.9404	12	0.9839	11
0.6925	14	0.4668	13	0.4051	14	1.3075	9	0.9599	12
0.9887	12	0.9381	10	0.8252	10	0.8266	13	0.8636	13

0.6245	15	0.3571	15	0.2270	15	0.6886	14	0.7520	14
0.6051	16	0.4182	14	0.4711	13	0.5056	15	0.5829	15
1.2826	9	0.0232	16	0.0445	16	0.2610	16	0.2134	16

.7

: _____

2007
53

2.4

2006-2003

28
2003

.2007

14

1.7 2003

4.2

.2007

2009 /

2007

8

)

3

(

(2007-2002)

-9

2007	2006	2005	2004	2003	2002	
11.74	11.48	11.28	10.81	9.67	10.46	
..	27.43	34.32	26.77	23.74	36.0	
38.26	42.27	43.13	36.33	42.15	45.35	
..	2.3	2.6	2.8	2.8	2.4	
..	1.77	3.79	1.63	1.33	1.11	

2007

- : _____

.World Tourism Organization, *Tourism Market Trends, Middle East*, 2006 Edition. Available at: www.unwto.org -

.World Bank, *World Development Indicators* 2008. Available at: www.worldbank.org -

2007 2006
) 11.7 11.5
 (10
 . 21 2007 2006

(*)

-10

(2007-2000)

2007	2006	2005	2004	2003	2002	2001	2000	
1217.4	1033.5	855.1	691.4	486.7	403.0	388.0	402.4	()
143.0	118.6	96.5	74.7	47.1	42.1	37.4	33.6	() (**)
11.74	11.48	11.28	10.81	9.67	10.46	9.63	8.35	()
17.67	18.16	17.91	15.80	14.38	15.48	15.61	14.93	()

.IMF, *Direction of Trade Statistics*, June 2008. Available at: www.imfbookstore.org :

.2007

()

(*)

(**)

2007

.(4)

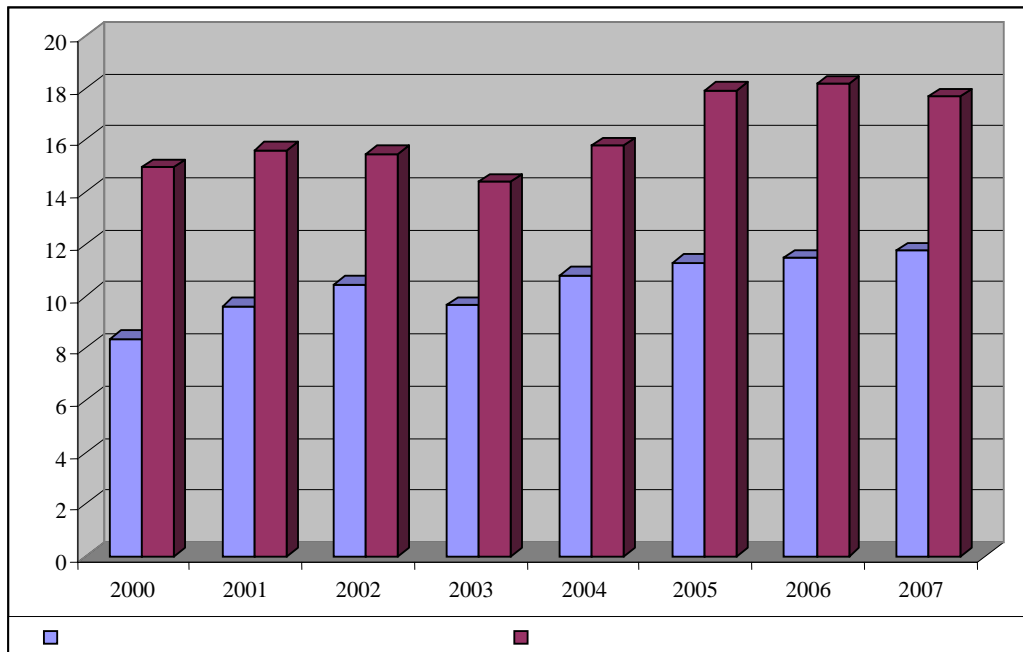
2006

18

2006-2004

(2007-2000)

-4



.10 : _____
 11
 7.3 2007
 48
 59

(2007-2000) (*)

-11

()

2007	2006	2005	2004	2003	2002	2001	2000	
36.55	37.19	36.28	33.63	31.82	31.85	31.14	28.19	
7.28	7.19	6.84	6.70	7.84	8.69	8.43	6.99	
20.91	20.56	20.57	18.07	17.49	17.40	16.08	15.51	
8.71	8.57	8.26	6.64	7.31	7.50	7.47	7.87	
3.24	2.98	2.90	2.51	2.85	3.27	2.97	1.63	
12.85	11.42	11.52	7.16	5.52	5.73	5.49	7.05	
5.64	5.14	5.50	5.92	6.28	6.85	6.23	5.97	
47.73	46.95	45.04	22.95	13.53	15.43	15.73	11.19	
33.25	34.32	35.16	36.52	32.07	32.48	29.31	32.47	
13.56	16.55	18.68	18.61	27.70	13.38	11.43	14.46	
59.20	58.68	59.35	55.36	54.29	45.57	47.38	53.28	
16.44	15.02	15.71	14.67	9.68	13.02	11.55	7.91	
16.46	16.64	17.90	17.85	19.24	20.89	20.56	19.43	
9.58	11.13	11.11	9.45	8.49	11.48	6.85	8.55	
7.82	7.54	7.20	7.32	7.01	7.50	7.33	6.66	
32.09	30.76	28.29	24.57	17.24	17.40	16.41	15.76	
14.18	13.95	13.91	12.69	9.88	9.46	10.30	7.22	
8.66	8.92	8.83	6.82	6.89	8.52	8.73	8.92	
4.46	4.55	4.55	4.78	4.48	4.27	4.16	3.38	
10.22	9.79	9.47	9.68	8.61	8.85	7.61	7.01	
24.60	23.75	24.53	23.08	22.28	25.70	19.79	16.98	

.IMF, *Direction of Trade Statistics*, June 2008. Available at: www.imfbookstore.org :

(*)

4.9
2007 2000 9.8

(45) (44)
.(12)) (22)

2007-2005

(2007-2000) (*)

-12

()

2007	2006	2005	2004	2003	2002	2001	2000
44.01	43.69	41.74	34.16	27.64	26.13	24.85	19.60
9.67	9.89	9.87	9.13	7.86	7.98	8.43	6.57
45.04	37.05	34.44	31.77	27.67	25.78	24.22	21.91
8.63	7.71	6.78	5.08	5.16	5.29	6.03	5.91
2.15	2.01	1.90	1.56	1.69	1.74	1.51	0.92
5.44	4.78	4.99	5.91	5.12	5.45	3.25	2.89
47.80	45.59	46.60	48.75	9.14	10.41	9.81	6.01
95.74	85.82	73.55	63.34	57.01	47.80	48.82	44.96
4.97	5.19	7.55	6.64	7.71	3.34	2.79	3.39
12.75	13.36	15.14	11.48	6.13	7.38	6.57	4.31
17.88	16.42	16.33	14.68	15.01	17.63	16.98	15.36
7.83	7.98	8.81	8.17	6.55	8.76	5.64	7.14
5.26	4.35	4.50	5.04	4.57	4.78	5.13	4.72
21.54	17.83	15.16	14.06	8.46	7.34	7.25	6.64
8.08	7.84	7.59	6.49	3.62	2.92	1.92	2.10
5.70	5.19	5.26	3.78	3.61	4.64	4.82	5.07
1.00	4.91	6.57	6.84	6.14	6.17	5.44	4.25
7.82	7.32	6.67	6.08	4.95	4.62	4.16	3.92
17.52	15.01	15.65	14.41	16.07	15.10	11.96	11.42
9.80	9.28	9.13	8.55	6.23	6.21	5.61	4.89

2007

.IMF, *Direction of Trade Statistics*, June 2008. Available at: www.imfbookstore.org :

- : _____
-
(*)

2006

2007

.(5 13) ()

-13

11.7

14

(2007 2006)

41

66

()		()	
2007	2006	2007	2006

())

25

.(

27 25

2007 / 1
) ()
 : 4 ()
 .()
) ()
 :()
) ()

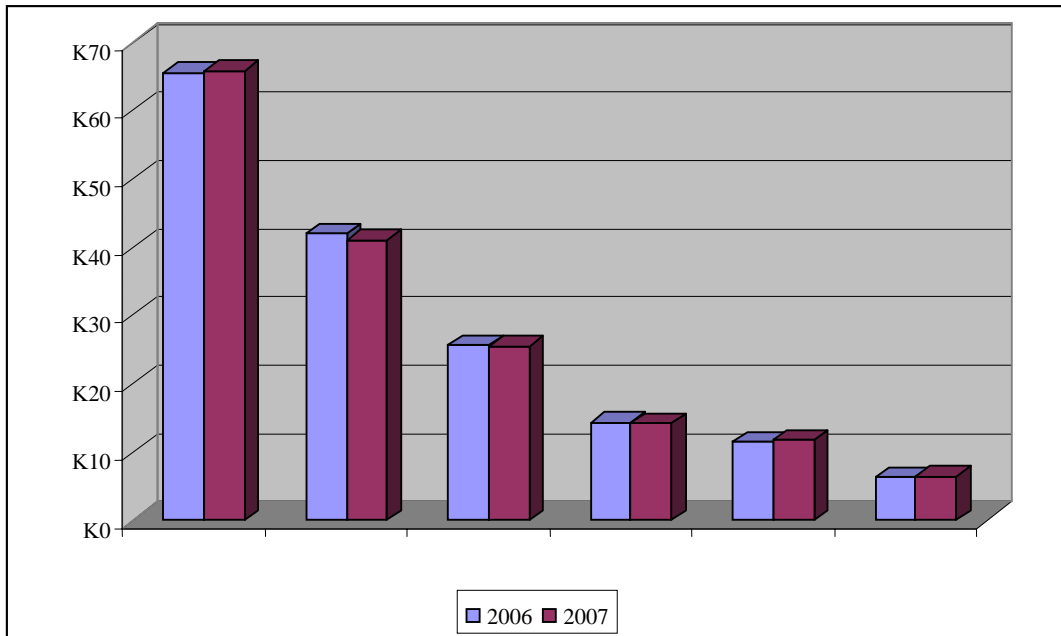
25.4	25.6	432.6	378.9	
65.8	65.5	7111.0	6054.0	()
14.1	14.3	79.1	63.4	()
41.0	42.0	1860.0	1788.6	()
6.3	6.2	48.0	40.2	
11.7	11.5	143.0	118.6	()

IMF, *Direction of Trade Statistics*, : _____
 June 2008. Available at: www.imfbookstore.org

10 () ()

(2007 2006)

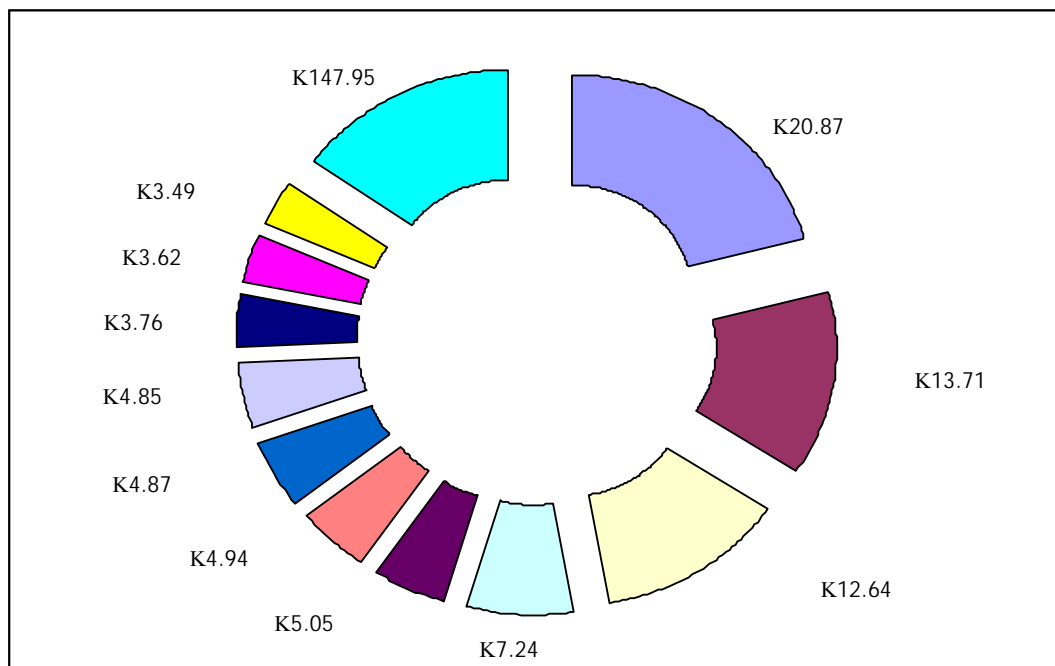
-5



.13

2007

-6



IMF, *Direction of Trade Statistics*, June 2008. Available at: www.imfbookstore.org : _____

-14

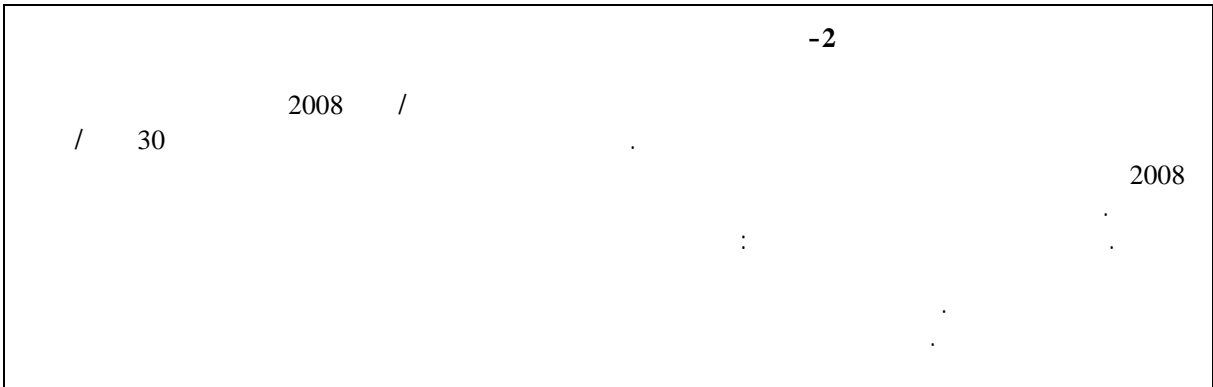
(2007 2006 2005)

2007			2006			2005			2007			2006			2005		
	1			1			1			1			1			1	
	2			2			2			2			2			2	
	3			3			3			3			3			3	
	4			4			4			4			4			4	
	5			5			5			5			5			5	
	6			6			6			6			6			6	
	7			7			7			7			7			7	
	8			8			8			8			8			8	
	9			9			9			9			9			9	
	10			10			10			10			10			10	
	11			11			11			11			11			11	
	12			12			12			12			12			12	
	13			13			13			13			13			13	
	14			14			14			14			14			14	
	15			15			15			15			15			15	
	16			16			16			16			16			16	
	17			17			17			17			17			17	

IMF, *Direction of Trade Statistics*, June 2008. Available at: www.imfbookstore.org : _____

:
()
()

()
()
(•)
()



2006

2007

-1

96 2006 83 94) (12)
 2007 (43) ((85)
 .(15) (

16 2007 33 2006 44 2006 30
 .2007

30 2006 27 8 2007 71
 .2006
 .(15)

-15

(2007 2006 2005)

	2007		2006		2005		
		()		()		()	
	43.67	845.9	29.58	959.9	16.99	299.4	
	18.07	2316.0	12.95	2184	
	7.87	127.3	71.46	2366.8	19.67	153.8	
..	24.11	260.6	
	11.86	301.3	12.24	246.3	28.93	300.3	
	56.59	2004	75.55	2455	
	34.10	564.7	37.04	651.2	(*)
	95.9	3342.8	82.8	2266.8	
	16.19	1874.6	32.60	3273.6	6.76	363.3	
	14.29	350.1	
	29.15	7088	8.96	1649	47.70	5775	
	19.28	89.5	70.10	849.6	(78.73)	203.9	
	29.75	13669.4	27.43	16846.8	34.32	12647.2	

2008 2007 : _____

() .. : _____

.2008

(*)

2007-2005
 29)
 (29 (12)
 .(30 48)
 40)

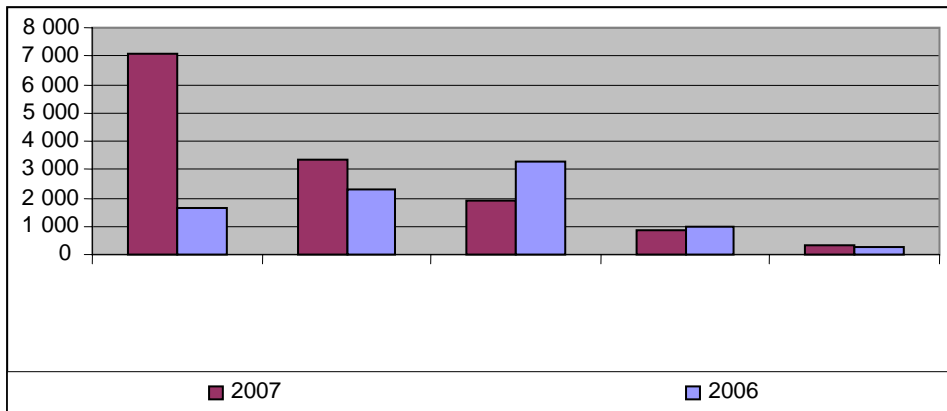
-2005
)
 (44 2007
 .(16 7 17)

2007
 17 2007-2005
 83 40
 48 96
 29

(2007 2006)

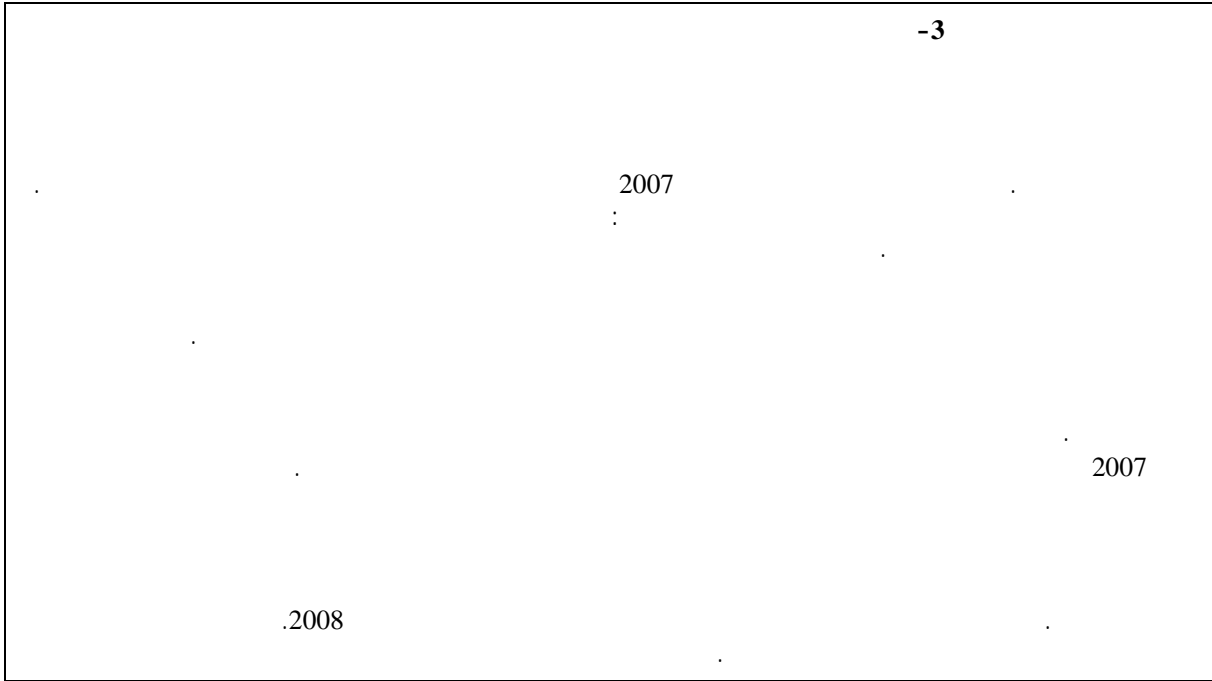
-7

()



.15 : _____

_____ -2



-3

2007

2007

.2008

45

2002
11

2001 /

2006

20

42.3

1
8

19

(16)

(2007-2001)

-16

()

2007	2006	2005	2004	2003	2002	2001		
2003	2071	1847	1793	1476	1131	963		
58.37	58.37	61.85	62.83	62.71	69.75	65.17		

..	..	1666	..	1619	1556	112424		
..	..	23.38	..	26.97	28.58	30.06		
..	3413	2923	2591	2189	3665	3469		
..	75.52	74.69	73.72	74.08	75.86	79.05		
2464	2387	2366	2387	2173	2054	1681		
36.44	36.44	37.09	39.79	42.49	40.57	31.21		
145	137	151	119	100	62	46		
8.34	8.34	10.43	9.65	8.54	6.26	5.14		
3513	3402	2574	2391	1615	3165	2497		
76.94	76.94	76.43	78.82	77.46	74.07	73.66		
..	..	363	..	207	168	157		
..	32.89	27.90	27.89		
511	510	388	404	283	312	231		
52.97	52.97	53.03	55.16	50.73	53.19	61.56		
405	423	437	520	421	403	330		
39.83	39.83	38.31	40.69	41.46	42.13	39.42		
1960	1922	1556	1366	1197	1068	922		
18.48	22.23	18.88	17.53	20.83	20.58	19.84		
92	81	75	64	57	116	120		
1.24	1.24	1.28	1.16	1.21	2.70	2.76		
7199	5382	5844	5127	4221	4594	4186		
62.43	62.43	72.71	59.76	57.56	61.16	62.23		
231	232	242	101	105	65	37		
60.84	60.84	71.97	65.30	68.07	66.20	48.58		
18523	19960	18402	16861	13731	19197	18070		
38.26	42.27	43.13	36.33	42.15	45.35	44.59		

World Tourism Organization, *Tourism Market Trends, Middle East*, 2006 Edition; and *Tourism Highlights*, 2006, 2007 and 2008 Editions. Available at: www.unwto.org.

2007 2006 : _____

67 43
 17 21 2006
 .(17) 40
 90

(2007-2002) -17)
 (

2007	2006	2005	2004	2003	2002		
934	966	890	835	665	249		
40.40	46.87	61.79	62.81	62.67	23.76		
5.9	6.77	6.92	7.25	6.55	2.6		
..	..	552	440	381	389		
..	..	24.72	27.60	28.71	29.16		
..	..	0.41	0.42	0.45	0.51		
..	508	427	394	326	858		
..	48.52	46.39	45.57	45.30	75.86		
..	3.22	3.10	3.56	3.4	10.16		
789	765	764	785	671	618		
30.89	33.61	35.65	39.86	42.44	40.57		
2.25	2.43	2.65	2.68	2.5	2.92		
18	17	19	17	9	6.86		
..	7.81	10.43	9.7	8.54	6.26		
0.01	0.01	0.02	0.02	0.01	0.012		

..	1354	1301	1080		
..	..	00	92.58	94.03	93.91		
..	..	00	4.9	7.18	5.33		
1885	1826	1663	1418	599	1070		
..	90.17	85.55	68.92	44.38	74.07		
1.39	5.61	6.63	6.03	2.76	5.18		
..	..	92	82	76	62		
..	32.89	27.9		
..	..	0.31	0.33	0.35	0.31		
370	370	323	275	187	152		
..	42.31	42.53	55.16	50.77	53.19		
0.58	0.7	0.95	0.97	0.79	0.77		
..	..	4315	3523	1896	1732		
..	..	26.32	58.34	58.33	60.63		
..	..	5.34	6.32	4.11	4.92		
2062	2155	2082	2201	2643	1805		
..	42.98	37.63	40.67	41.47	42.13		
8.59	9.26	9.44	11.14	14.59	10.39		
1578	1547	1293	1074	955	819		
16.96	20.38	18.88	17.53	20.84	3.27		
1.23	1.44	1.45	1.37	1.17	0.97		
67	59	59	45	39	68.96		
0.92	0.99	1.28	1.16	1.20	2.61		
0.09	0.09	0.11	0.09	0.09	0.19		
4473	3343	3763	3865	1967	3537		
85.56	67.4	69.46	59.6	34.79	61.16		
1.017	0.96	1.22	1.54	0.92	1.87		
122	122	130	51	15	2		
..	67.22	72.01	24.02	68.07	66.20		
..	0.54	0.57	0.8	0.4	0.024		

World Tourism Organization, *Tourism Market Trends, Middle East*, 2006 Edition. Available at: _____ : _____
www.unwto.org.

10

14

18

19

31

24

26

46

57

67

47

58

(5) 92

12

18

World Economic Forum, *Annual Report, Chapter (5)*
 2.2: "Assessing Travel and Tourism Competitiveness in the Arab World". Available at: www.weforum.org.

	2007	2006	2005	2004	2003	2002	2001
	2918.9	2450.9	2125.0	1981.4	1870.9	1814.8	1709.4
	18.4	17.2	16.5	17.2	18.4	19.0	19.1
	150.69	75.53	120.6	244.31	425.19	2846.2	1709.4
	..	422.9	318.2	329.5	149.9	338.1	380.7
	21.6	21.2	20.2	24.3	32.6	35.8	35.1
	42.5	36.5	40.5	37.6	36.0	45.6	55.8
	171.6	151.0	139.3	143.2	125.0	107.1	92.7
	0.5	0.5	0.5	0.5	0.5	0.5	0.5
	10.61	4.56	17.81	22.4	21.4	13.1	19.1
	..	35.0	38.2	43.7	42.0	40.5	24.6
	0.9	0.9	1.1	1.1	1.1	1.1	1.0
	2.2	2.2	3.1	3.6	4.52	4.7	4.6
	203.4	176.9	136.5	172.2	122.5	74.9	46.9
	0.2	0.2	0.1	0.2	0.2	0.1	0.1
	12.22	9.85	12.63	19.52	19.32	7.03	3.92
	..	84.8	36.8	54.8	52.3	22.8	21.0
	0.6	0.7	0.6	0.8	0.8	0.6	0.5

(6)

() 18

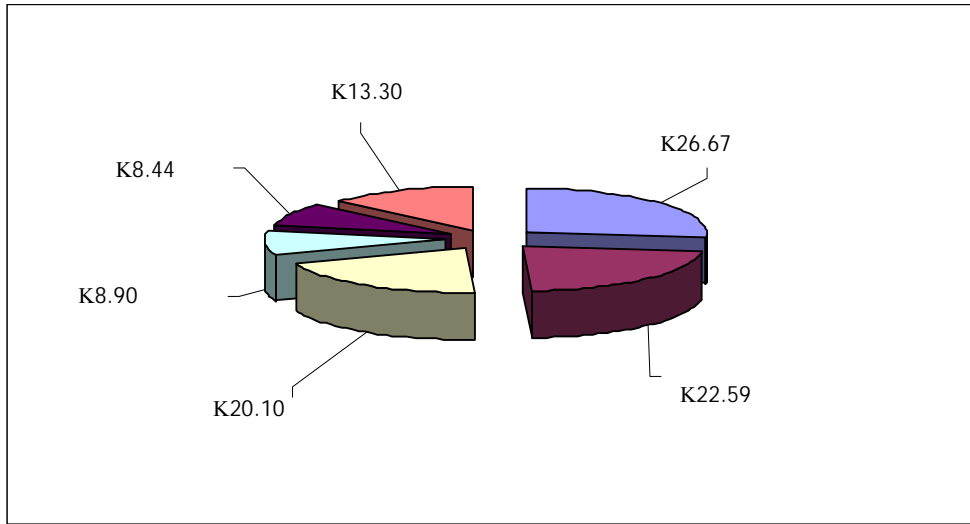
2007	2006	2005	2004	2003	2002	2001		
535.6	516.8	535.0	555.8	577.9	87.8	110.5		
1.4	1.6	2.1	2.4	2.7	0.4	0.6		
60.52	86.13	84.11	80.19	361.16	88.5	385.9		
..	1933.2	680.1	524.4	491.9	114.7	72.3		
2.3	2.8	3.4	2.1	6.7	1.2	1.7		
3.2	3.00	2.94		
1149.9	751.6	660.4	912.0	795.0	635.7	481.0		
2.4	1.7	2.3	4.1	4.2	3.9	3.3		
47.20	21.23	28.65	60.35	58.7	99.0	92.7		
..	36.5	36.0	92.0	129.7	185.2	266.4		
13.2	9.3	9.9	22.3	29.3	29.3	25.8		
82.1	45.3	35.3	68.2	150.2	255.4	967.1		
269.1	269.1	269.1	204.7	212.4	150.3	184.0		
6.7	6.5	6.0	4.9	5.4	4.3	4.8		
1281.4	708.16	572.55	417.67	1180.0	6111.0	1979.8		
..	18.6	24.1	18.3	21.9	9.3	21.2		
..		
..		
2596.1	2341.0	2215.8	2516.1	2134.4	1144.8	1038.2		
10.8	10.1	10.1	12.7	11.8	6.6	6.2		
91.25	85.47	79.36	126.3	71.69	445.5	417.1		
..	331.0	909.8	952.6	948.1	253.2	428.2		
23.3	21.4	23.0	26.8	27.7	18.1	16.3		
20.1	17.5	18.6	21.4	17.1	15.8	20.7		
3445.2	2398.3	2257.8	1503.5	1332.5	1301.9	1310.0		
2.7	2.2	2.5	1.9	1.6	1.5	1.5		
29.76	23.88	42.02	69.57	296.1	201.21	256.85		
..	274.8	226.9	103.3	135.0	105.3	104.3		
6.9	6.1	6.8	5.4	6.2	6.6	10.3		
12.1	9.8	11.0	10.5	9.8	9.8	10.1		
538.4	436.3	367.1	337.7	289.1	230.2	260.9		
0.7	0.7	0.7	0.7	0.7	0.6	0.7		
20.89	17.81	12.5	31.6	11.9	47.9	9.2		
..	41.7	52.9	47.7	53.7	47.3	50.4		
1.7	1.7	1.8	1.9	2.0	2.0	2.3		
2.3	2.2	2.3	2.1	2.1	2.3	3.1		
1090.2	1090.2	1090.6	1090.6	1079.5	1099.9	1100.8		
4.8	5.1	6.7	8.5	9.6	10.7	11.4		
235.0	89.95	(421)	507.23	1124.5	1078.3	809.4		
..	383.4	324.3	431.5	461.9	188.8	240.3		
12.0	15.7	22.7	27.4	24.5	39.6	44.6		
14.1	14.5	17.8	19.3	21.7	24.9	30.1		
12919	9818	9154	8764	8002	6235	5934		
2.5	2.3	2.6	2.8	2.8	2.4	2.3		
49.64	36.52	56.08	93.94	206.21	138.6	110.8		
..	138.1	146.2	153.5	156.2	112.2	134.0		
6.4	6.5	7.1	7.2	9.4	8.7	9.7		
6.1	6.1	70	9.3	9.8	10.3	11.9		

.World Bank, *World Development Indicators 2008*. Available at: www.worldbank.org :

: _____
 .. : _____

2007

-8



.18

43 9.8 2005 17.2

2006 5.2

2005 .2005 13.2

76

2006 30 2015

1.2 2006

7

.2006 5

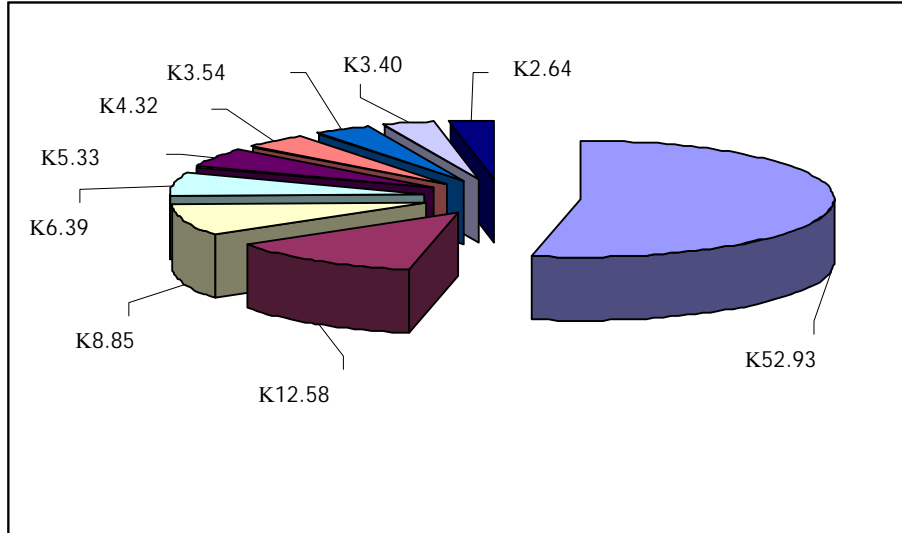
40

2006

.(19 9) 2006

2006

-9



.19

:

(2006-2001)

()

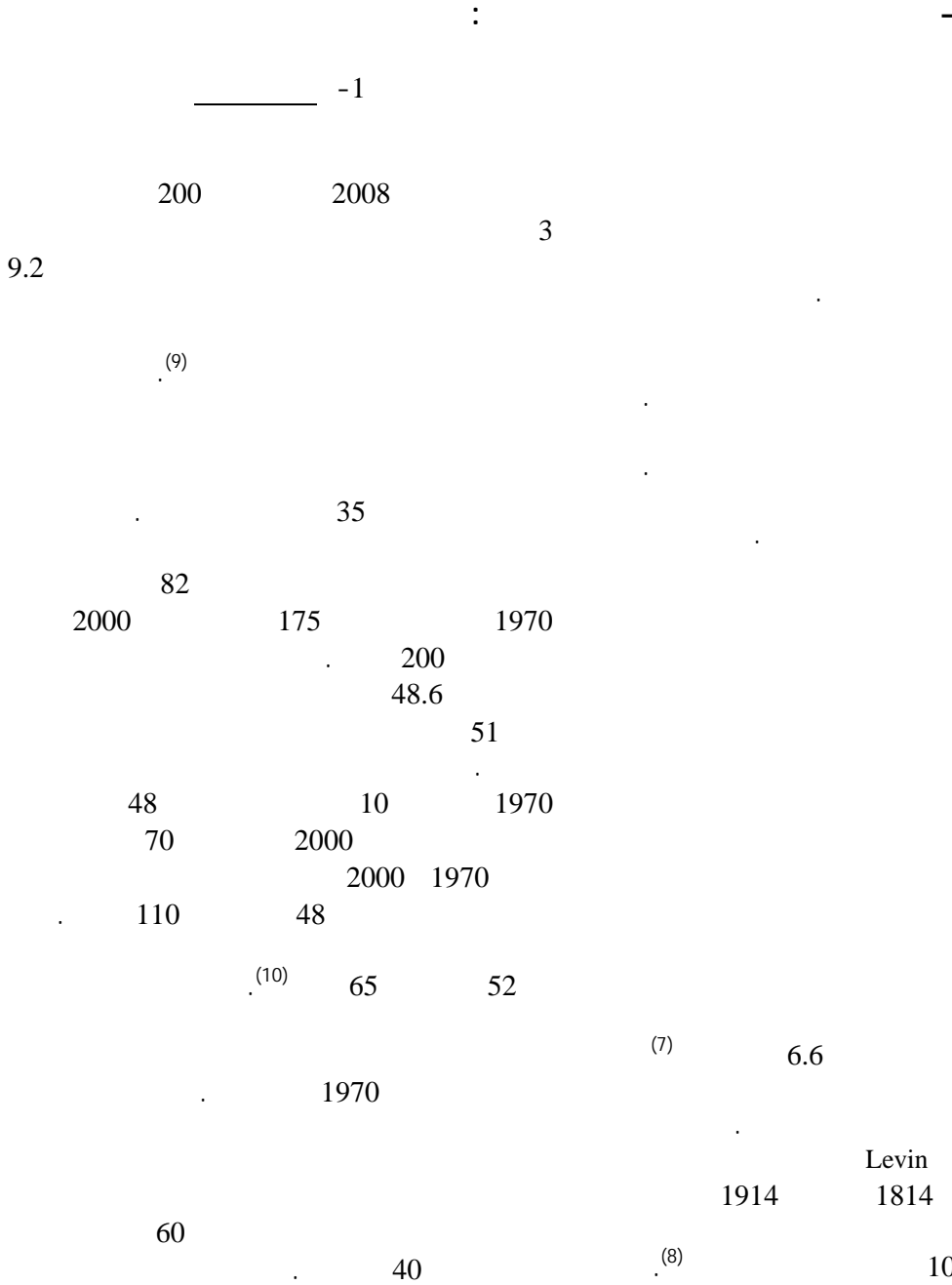
-19

2006	2005	2004	2003	2002	2001	
348	401	361	749	322	269	
2.44	3.12	3.13	7.37	3.37	3.00	
259	219	197	179	159	226	
0.83	0.76	0.67	0.66	0.69	1.13	
125	223	189	141	197	134	
0.11	0.22	0.22	0.21	0.35	0.24	
22	15	7	5	4	4	
0.04	0.04	0.03	0.02	0.02	0.01	
16	47	64	70	46	92	
0.05	0.19	0.27	0.33	0.22	0.45	
1235	1099	595	368	206	108	
2.81	3.86	2.70	1.92	1.25	0.74	
5197	13231	2790	1350	64	73	
12.38	41.71	8.28	6.78	0.24	0.25	
869	669	669	583	970	522	
20.84	14.94	16.16	14.87	27.84	13.67	
424	146	159	135	271	145	
1.82	0.66	0.80	0.75	1.56	0.87	
524	597	873	592	742	753	
0.49	0.67	1.11	0.73	0.87	0.83	
627	417	424	323	292	311	
0.95	0.80	0.85	0.74	0.81	0.92	
171	202	152	140	350	275	
0.80	1.24	1.17	1.24	3.40	2.85	

9818	17266	6479	4634	3622	2913	
1.77	3.79	1.63	1.33	1.11	0.87	

.World Bank, *World Development Indicators 2008*. Available at: www.worldbank.org : _____

.. : _____

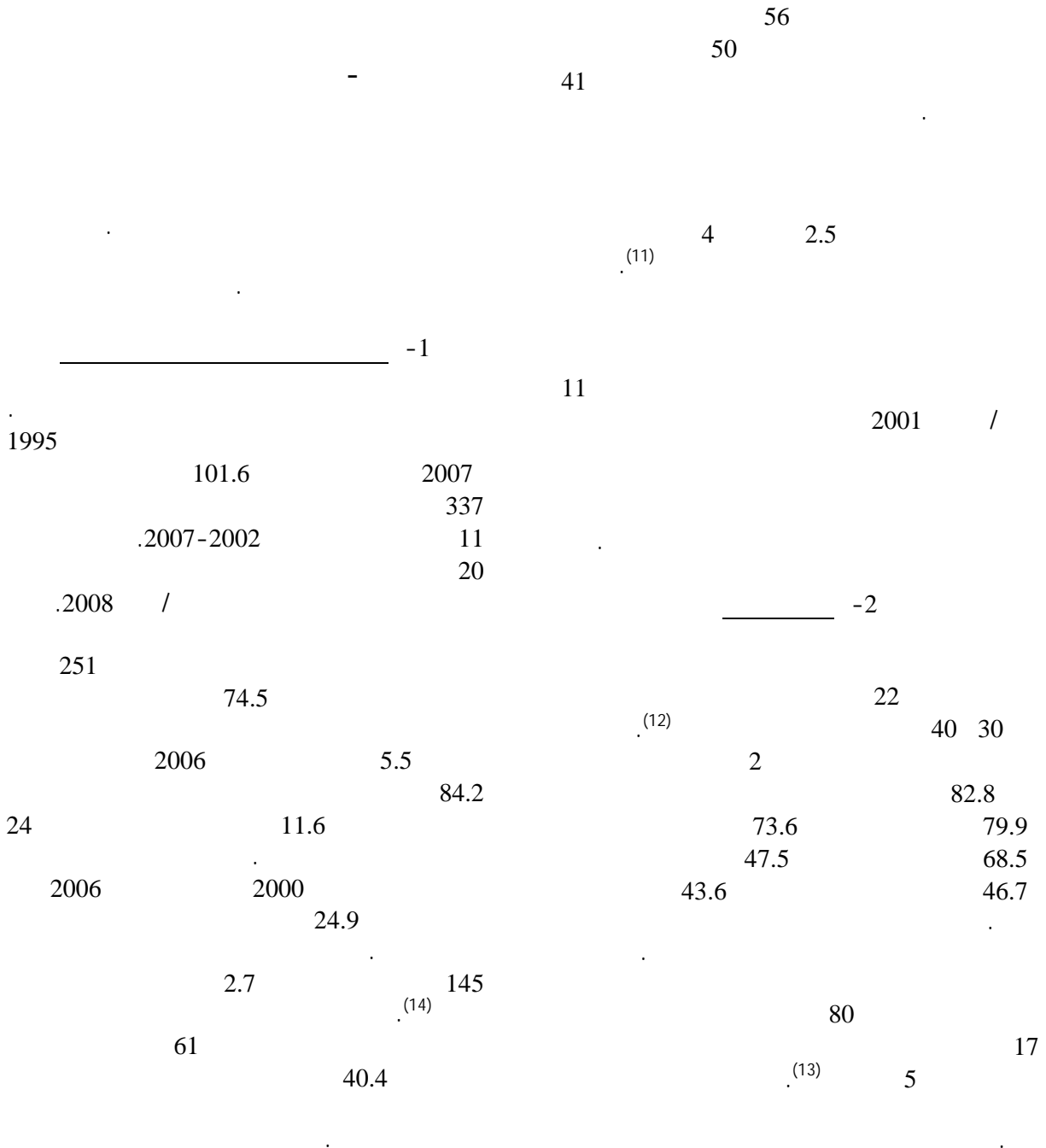


World Bank, *Migration and Remittances Fact book 2008*. Available at: www.worldbank.org/publications.

Global Commission on International Migration (10) (GCIM), *Migration at Glance*, 2008. Available at: www.gcim.org.

Lester R. Brown, Earth Policy Institute, *World (7) Facing Huge New Challenge on Food Front: Business-as-usual 2008*. Available at: *Usual Not a Viable Option*, 16 April www.earth-policy.org.

The LEVIN Institute, Globalization 101.Org (8) project, *Migration and Globalization*, 2008. Available at: www.globalization101.org.



Maria Anglae Villalba, DVV International, (11)
Adult Education: Migration and Integration from an International perspective, 2007. Available at:
www.iiz-dvv.de/index.php?article_id=726&clang=1.

Kamal Raj Dhungel, World Bank, *Remittances*: (12)
A significant income source, 2008. Available at:
www.worldbank.org.

(2007-2002)

-20

()		()						
2007-2002	2007-2006	2007	2006	2005	2004	2003	2002	
118	11	251	226	194	163	143	116	
100	11	59	53	47	39	35	29	
246	22	47	39	32	23	16	14	
117	6	61	57	48	42	35	28	
89	8	29	27	24	23	20	15	
82	11	44	40	33	29	30	24	
132	7	12	11	10	8	6	5	
118	15	33	29	24	20	17	15	
118	11	218	197	169	143	127	100	
54	12	81	72	68	67	61	53	()
304	7	5	4	4	3	2	1	
99	11	337	303	266	234	206	170	
177	23	52	42	34	30	22	19	
78	13	159	141	126	15	101	89	
17	2	28	27	24	22	23	24	
81	13	238	210	184	167	147	131	

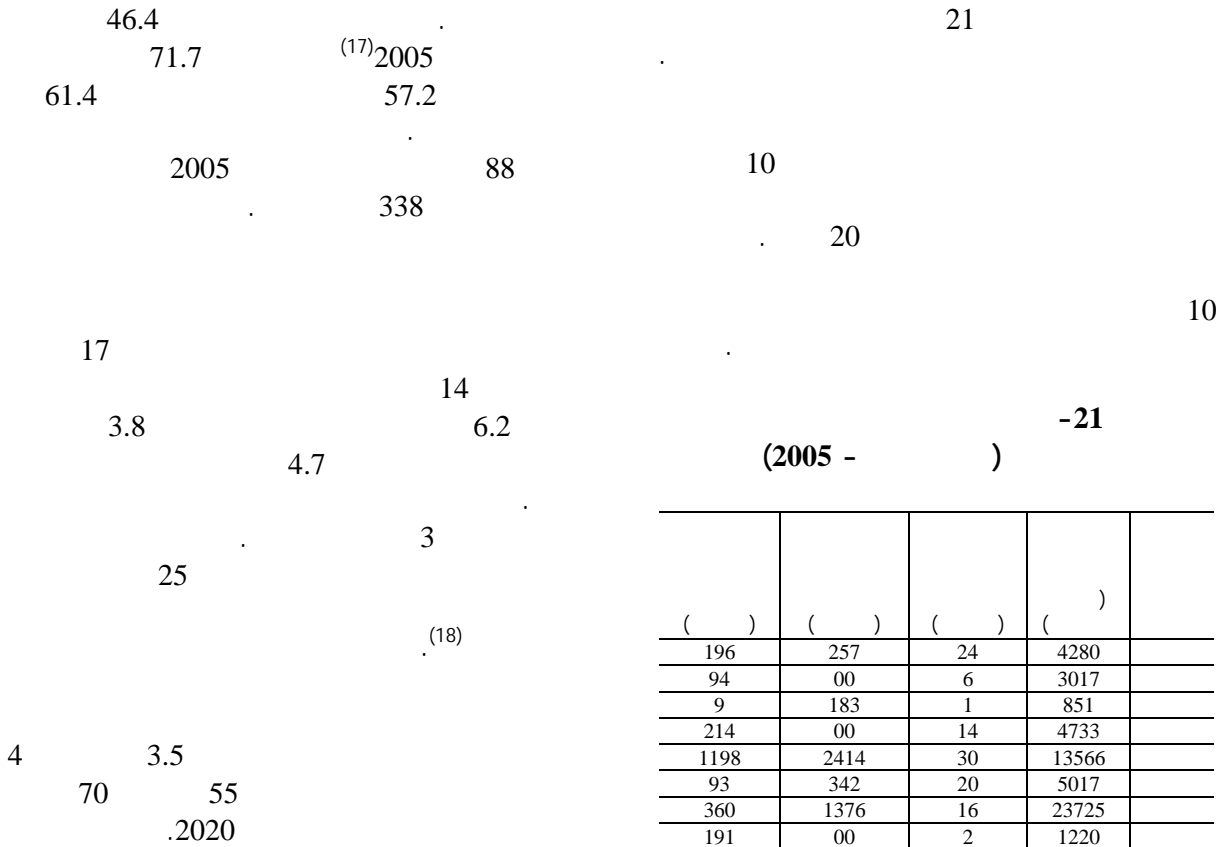
Dilip Ratha, Sanket Mohapatra, K.M. Vijayalakshmi, Zhimei Xu, World Bank, Migration and Development Brief 5, : _____
Revisions to Remittance Trends 2007. 10 July 2008.

300	170	2007	337	2002
167	(42.2)	(15.6)	(12.3)	(13.8)
55	25.7)	(27)	(25)	(17)
2	0.2	(15)2007	(17)	-2
13.5	24.8			
13.2	(16)2004			

Michael A. Edberg and Manrise D. Lovi, *The* (16)
Impact of Remittances on Economic Growth, 2008.

.9

(15)



()	()	()	()
196	257	24	4280
94	00	6	3017
9	183	1	851
214	00	14	4733
1198	2414	30	13566
93	342	20	5017
360	1376	16	23725
191	00	2	1220

Shahbaz, M., Rehman, J. and Hussain, W., : _____ International Research Journal of Finance and Economics, Issue 14, 2008, *Does foreign remittances reduce government spending?* Available at: www.eurojournals.com/finance.htm.

(19) 50 .2015 -

Nimrod Raphaeli, The Middle East Media (17) Research Institute, *Unemployment in the Middle East: Causes and consequences*, 2006. Available at: www.memri.org/bin/printfriendly/pf.cgi.

(18) .2008

(19)

.2008 : _____ (20)
70)

(
.(23.3)

92

87.1

80
40
31.2

30.9
.23

_____ -1

-23

(2005)

()

2.1	0.5	1.5	87.1	8.7	
3.6	2.0	2.0	80.1	12.4	
2.0	92.4	5.6	
12.0	..	1.9	46.0	40.0	
3.2	0.1	0.3	65.4	30.9	
4.1	2.1	3.2	59.3	31.2	
3.6	1.2	2.1	69.8	23.3	

.2008

: _____
2005

.. : _____

10

14.5

70.3

35.1

80

56.69

58.58

.22

-22

(2005)

()	()	
82.26	3315	
58.58	522	
66.13	914	
56.69	555.7	
81.70	1594.6	
64.57	7579	
70.27	14480.3	

24

6

54.1

12

80

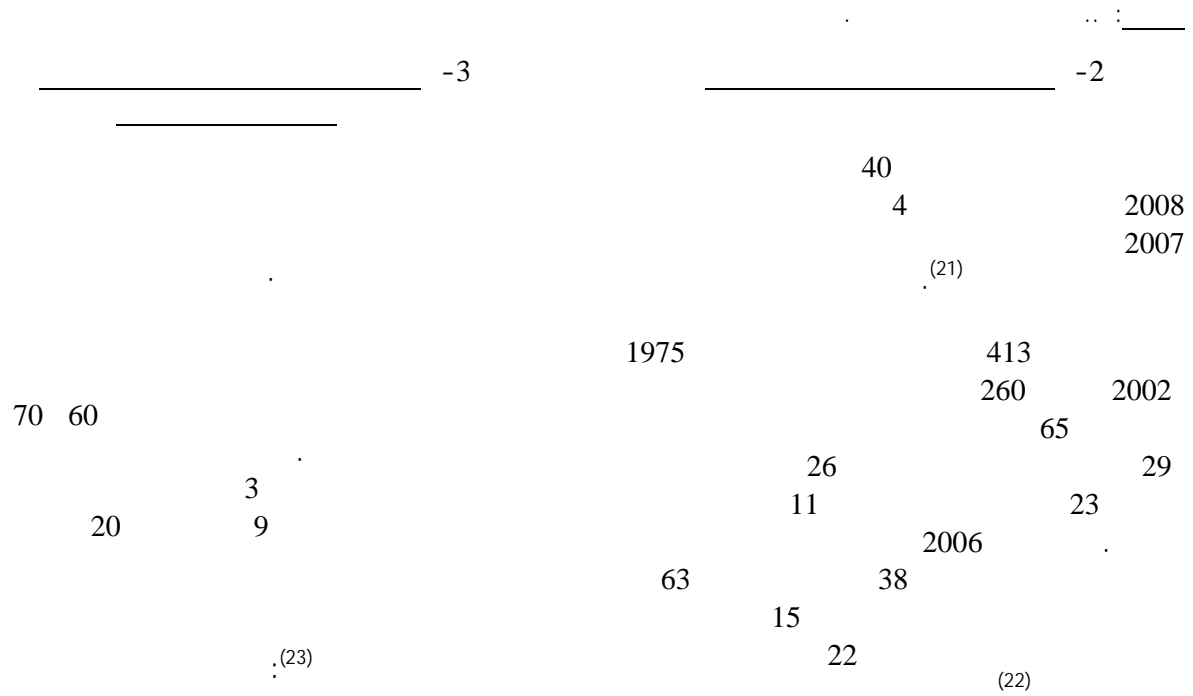
70

World Bank, *Middle East and North Africa* (20)
Region: Job creation in an Era of high growth. In: *Economic Development and Prospects, 2007*. Available at: www.worldbank.org.

()

2002	2004	2003	2004	2002	2004	
110	20	50	..	50	260	
..	..	9	250	
40	30	80	..	60	..	
450	50	100	70	100	900	
100	..	170	110	..	400	
..	80	
..	..	100	100	
160	..	170	30	35	350	
30	250	
120	25	70	..	50	500	
140	30	260	30	35	900	
60	800	
..	70	..	
1200	120	320	330	100	1300	
..	..	80	

United Nations, Department of Economic and Social Affairs, Expert Group Meeting on International Migration and development in the Arab Region, *Arab Versus Asian Migrant Workers in the GCC Countries*, by Andrzej Kapiszewski, Beirut, 15-17 May 2006.



Zawya, *Remittances from GCC to exceed \$ 40 billion*, July 2008. Available at: www.zawya.com.

Shafiq al-Asadi, *GCC Chamber of commerce* worn of negative impact of migration labour- urged to open mernets to gulf citizens, 2008.

N. Janardhan, *Expatriates Face a Changing Reality in Gulf countries*, October 2006. Available at: <http://yaleglobal.yale.edu/article.print?id=8333>.

	()		()
	2003		()
2004			2003
	()		2013
		2010	
	()		()
			2003
;(24)		2005	()
	()		6
	()		
	()	6	(•)
			2006
	()		
	(•)	15	()
			25
	-4		
		2005 /	
			2006 /
			22
			()
		2003	
			10
			800
			()

United Nations, Department of Economic and Social Affairs, Expert Group Meeting on International Migration and development in the Arab Region, *Arab Versus Asian Migrant Workers in the GCC Countries*, by Andrzej Kapiszewski, Beirut, 15-17 May 2006.

3 : ()

180 : ()

. 90 ()

_____ : ()

10 : ()

: ()

: ()

5

: (•)

10

90

90 95

.
_____ : ()

: ()
90

20

4

: ()

: ()

90

3

: ()

50

: ()

180

25

: (•)

: ()

: ()

-4

:
()

()

1994

(General Agreement on Trade in Services-GATS)

_____ -1

:

()
()
()

()
()
()
()

)

:
(12)
()

()

_____ -2

-

() :

()

()

:

() 4

()

5 3

()

()

()

()

)

.(

[.www.escwa.un.org](http://www.escwa.un.org) :

()
(E/ESCWA/GRID/2007/11) 2007

/ 6-5
.2007 /

()

Union pour la)
(Coordination du Transport de l'Electricité-UCTE
2007 /

UCTE

2008

: - ()

. . . 400

:2008 2007

(EIJLLST) -1

. . . 400 : - (•)

56

. . . 500/400

28

UCTE

2007 /

: - ()

. . . 400

- - ()

. . . 400

- /

(-)

(-)

. . . 184

2007 /

55

. . . 7

. . . 224

(-)

7

. . . 84

: - ()

: -

()

1997

. . . 400

2008

2012

:

2008)
 .2009 (

2008 /	-
2008	-
2008 UCTE	-
2012) (. . 500-400
400	
2010-2009	

_____ -4

_____ -2

_____ -5

/ . . . 400
 400 2008
 .2008

_____ -3

2012 3000
 1500
 2015 1500
 1370

)
 (50 . . . 400

_____ -6
 (_____)

400 . . . 220

9

1.2

13

_____ -7

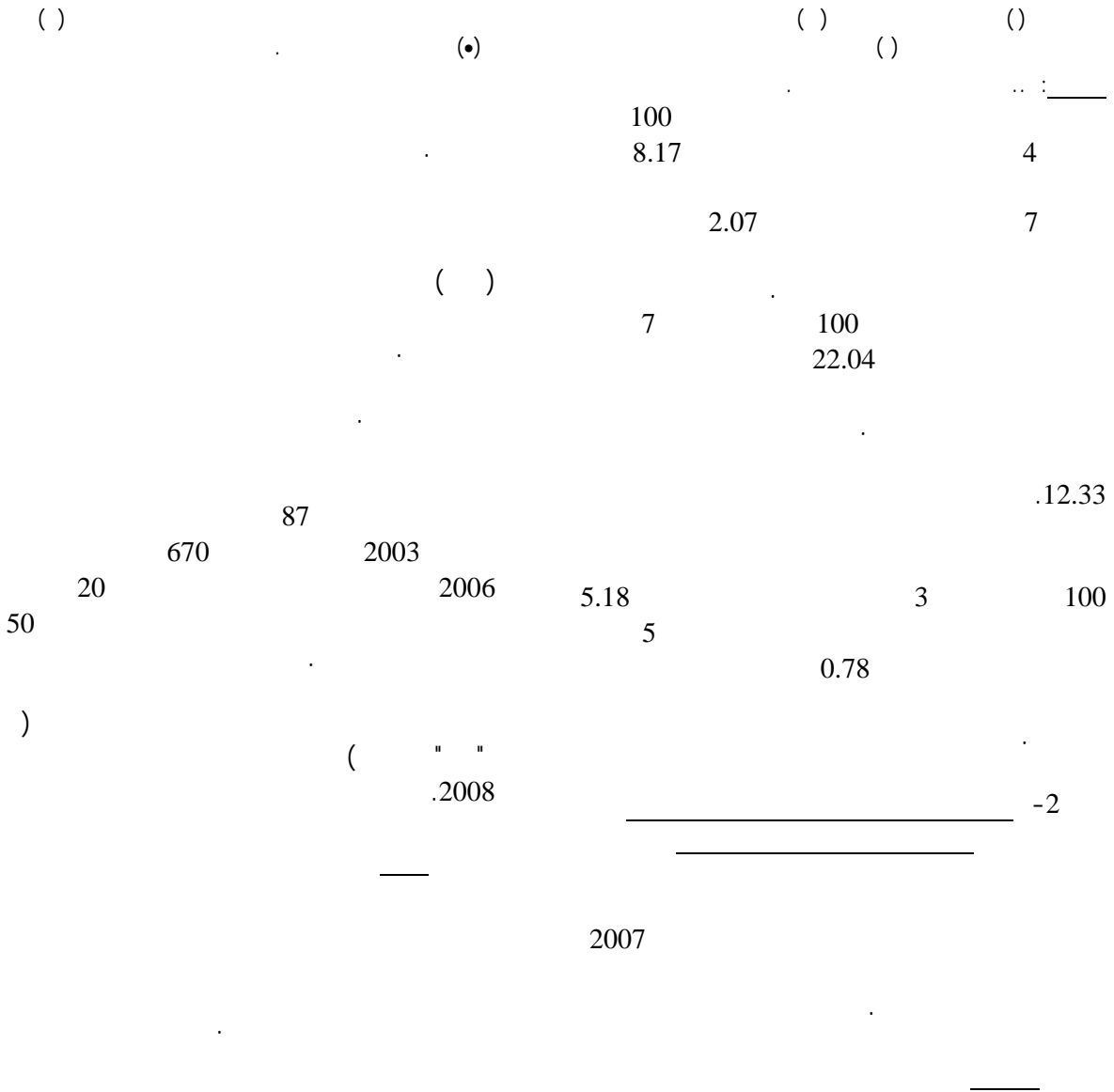
	25			
3				-8
	19.23	100		
11				
	10.04			
49.32		100	2008 / 7	
11	50.79			-
				-1
	100			
	.2007		2007	

(2007 2006)

-25

100		100		100		100		100	
2007	2006	2007	2006	2007	2006	2007	2006	2007	2006
1.55	0.83	19.02	13.65	3.8	3.52	80.53	74.4	9.88	10.52
5.17	5.17	52.51	36.69	20.64	14.67	173.37	118.51	31.63	28.12
5.23	5.23	33.22	21.3	8.14	8.06	148.28	121.71	26.3	26.18
1.11	0.43	16.68	12.68	2.45	1.76	75.94	71.88	12.33	12.42
0.51	0.59	10.34	7.38	0.58	0.58	63.34	62.95	8.63	8.52
..	..	2.56	2.56	0.21	0.13	4.77	2.01	2.33	2.12
0.16	..	4.36	3.96	1.38	1.38	73.05	65.81	14.56	8.09
0.04	0.03	10.7	7.69	2.13	1.58	33.62	23.96	17.32	16.62
0.01	0.01	1.36	1.36	0.5	0.5	5.4	6.37	1.56	1.56
0.01	0.01	9.85	9.46	..	2.3	19.36	12.66	0.9	1.72
..	..	1.13	1.11	0.11	0.11	6.9	6.08	1.15	1.22
..	..	0.19	0.14	0.06	0.06	48.36	2.22	4	4
0.73	0.58	11.56	12.22	2.71	2.44	96.33	69.59	10.33	10.65
1.49	..	9.52	7.19	3.17	2.4	27.46	22.1	9.38	9.18
8.37	5.57	41.75	34.55	10.34	8.36	150.41	109.6	28.24	27.21
0.93	0.93	31.57	29.53	10.54	10.54	97.28	88.57	18.7	18.99
5.26	4.7	26.28	26.32	8.58	8.59	30.74	30.53	18.85	18.85
0.57	0.27	11.42	7.95	1.75	2.65	39.8	23.86	14.87	14.33
1.53	1.27	23.38	19.85	1.55	1.3	64.15	52.07	7.67	4.12
0.03	0.02	0.95	3.17	0.13	0.11	41.62	33.57	1.1	1.1
2.43	0.87	25.07	18.66	7.14	7.14	114.74	78.05	16.16	15.68
..	..	1.43	1.25	0.72	0.36	13.76	9.54	4.47	4.62
⁽¹⁾ 0.78	⁽¹⁾ 0.5	12.33	9.69	⁽¹⁾ 2.07	2.36	50.79	35.98	10.04	9.5
^(a) 0.76	⁽¹⁾ 0.52	11.81	9.09	⁽¹⁾ 2.47	3.05	47.6	32.09	10.84	12.42
5.18	4.3	22.04	29.57	8.17	6.65	49.32	40.76	19.23	19.4

.ITU, Measuring the Information Society, the ICT Development Index, 2006-2007 : _____



(Information Technology Industry Development Agency-ITIDA)⁽²⁶⁾

69⁽²⁷⁾2007 60 2003

Telecommunications Regulatory Authority-⁽²⁵⁾(TRA) (Local Loop Unbundling)

(26) www.itidia.gov.eg :
 Business Software Alliance, *Fifth Annual* (27)
Business Software Alliance and IDC Global Software Piracy Study 2007. Available at: <http://global.bsa.org/idc/globalstudy2007/>.

(25) www.tra.org.bh :

70

1.15

30

729.5

2005

" "

1750

150

1.48

.2007

268

(Etisalat) "

(STC)

" "

450

1.36

2007-2001

.2007

11

(28)

1.3

9.8

2007

.2006

4.8

2007

.2008

1.2

(Zain) " "

53

(30)

36

25

(OmanTel) " "

(29)

(28)

[.http://www.trc.gov.jo](http://www.trc.gov.jo) :

(29)

http://www.telegeography.com/cu/article.php?article_id=23924&email=html.

(30)

[.http://www.sa.zain.com](http://www.sa.zain.com)

"	"	31
.2009		
2007	1.273	
	0.39	
2008		16000
		1.257
12.3		
12.4	2008	/
		.2007

" " " - "

(5) -(Orascom Telecom)

-5

(Mobile Telecommunications Company-MTC) " "

	50	2008	1983
15		(MTC Touch)	28
			(Celtel) " "
	2006		" "
75	(one network) "	2008	(3G)
5.91			16000
			.2007
		2011	
	150		
1998		(Orascom Telecom) "	"
(Global			System for Mobile Communications-GSM)
(Mobilink)	(Tunisiana)	(Djezzy)	(Mobinil)
			(Telecel)
			(Banglalink)
.2006	45	2008	74
2007	180		20000
31	17		4.72
	.2008		"
	.2008	80	.2007 /
			www.orascomtelecom.com www.zain.com : _____

32967)

2006

-3

(

26

2006 2005

26

(2006 2005)

-26

()		()		()	
2006	(*)2005	2006	(*)2005	2006	(*)2005
					/

4.8	3.9	8	4	178	101	
5.7	4.9	52	36	913	741	
56.4	34.2	3398	1295	6024	3789	
50.5	42.5	5860	4603	11609	10840	
16.2	18.4	2569	2657	15834	14449	
19.0	21.0	1772	1588	9318	7570	
16.1	20.5	268	328	1663	1604	
54.7	20.6	256	59	468	285	
41.7	42.0	1153543	1046974	2767235	2495490	

. World Bank, *World Development Indicators 2008*. Available at: www.worldbank.org : _____

2008 2007 2005 (*)
2008

-28

(2006 2005)

(Internet Corporation for " " Assigned Names and Numbers-ICANN) (Internet Engineering Task Force-IETF) (Public Internet Registry-PIR) (Afilias) : 2008

()		()		
2006	(¹)2005	2006	(¹)2005	/
1.2	1.4	35	34	
5.9	2.4	375	127	
0.1	0.04	0.3	0.2	
..	..	258	906	
0.8	2.1	29	18	
0.7	0.3	4	2	
0.5	0.4	15	9	
9.8	9.6	830	707	
0.9	0.6	148	92	
5.1	0.2	3	0.2	
20.6	20.9	1418509	1243114	

World Bank, *World Development Indicators 2008* : _____ Available at: www.worldbank.org.

2008 2005 (*)
2008 2007 (*)
2008

2008

2005

.2007-2005

160

-5

58

400

⁽³²⁾2006 2005

(7)

()

.2007

⁽³³⁾2006

0.16

2063

⁽³⁴⁾

2008-2000

203

485

16.8

73.8

⁽³⁵⁾

18.8

()

18.5

()

20

17

()

⁽³²⁾

(E/ESCWA/ICTD/2007/15) 2007

www.escwa.un.org :

:()

⁽³³⁾

www.madarresearch.com

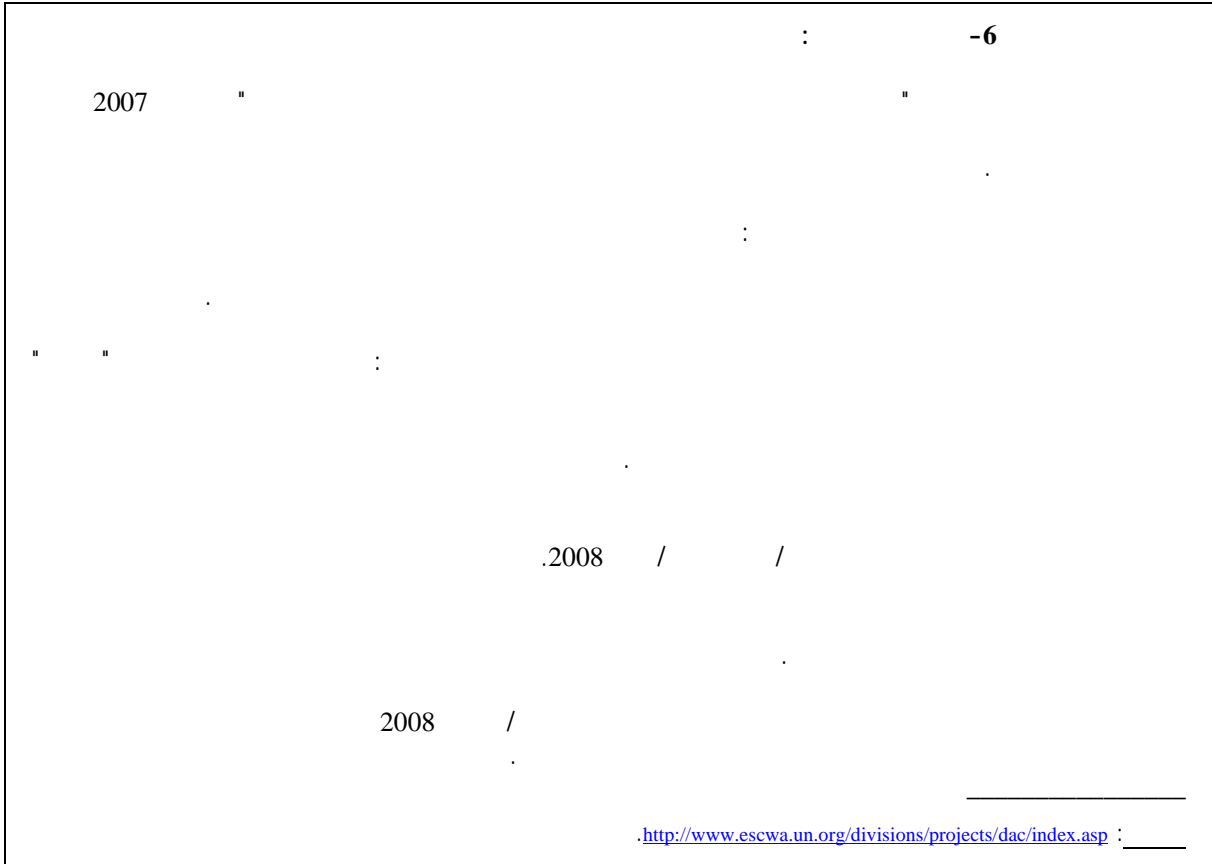
:

⁽³⁴⁾

www.internetworldstats.com/stats7.htm.

.35

⁽³⁵⁾



2007

4500

Scientific American " "

.2007 (www.esyria.sy)

(www.e.sy)

-

-

-1

.2007

2007
2006

2007

.2006

2007

2007

4.31
2006

4.25

5.57
2007

5.36 2006

26.1 2006

28.4
2007

2006

13.1
.2007

10.5

-2

2007

:

(1)

(2)

(3)

9	17	2006	2005
8.9	53	12.6	
		.2006	

(4)

2008

(5)

100

10

(6)

-

(10)

(11)

(7)

(12)

(13)

(8)

(14)

(9)